

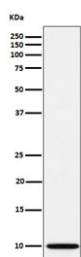
NDUFA1 Antibody [clone 29N52] (RQ8820)

Catalog No.	Formulation	Size
RQ8820	Antibody in PBS with 0.02% sodium azide, 50% glycerol and 0.4-0.5mg/ml BSA	100 ul

Recombinant RABBIT MONOCLONAL

[Bulk quote request](#)

Availability	1-3 days
Species Reactivity	Human
Format	Purified
Clonality	Recombinant Rabbit Monoclonal
Isotype	Rabbit IgG
Clone Name	29N52
Purity	Affinity chromatography
UniProt	O15239
Applications	Western Blot : 1:500-1:2000
Limitations	This NDUFA1 antibody is available for research use only.



Western blot testing of human A673 cell lysate with NDUFA1 antibody. Predicted molecular weight ~8 kDa.

Description

NADH dehydrogenase [ubiquinone] 1 alpha subcomplex subunit 1 (NDUFA1) is an accessory subunit of the mitochondrial membrane respiratory chain NADH dehydrogenase (Complex I), that is believed not to be involved in catalysis. Complex I functions in the transfer of electrons from NADH to the respiratory chain. The immediate electron acceptor for the enzyme is believed to be ubiquinone. [UniProt]

Application Notes

Optimal dilution of the NDUFA1 antibody should be determined by the researcher.

Immunogen

A synthetic peptide specific to human NDUFA1 protein was used as the immunogen for the NDUFA1 antibody.

Storage

Store the NDUFA1 antibody at -20oC.