

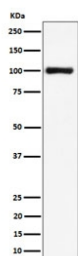
NCL Antibody / Nucleolin [clone 29N05] (RQ8805)

Catalog No.	Formulation	Size
RQ8805	Antibody in PBS with 0.02% sodium azide, 50% glycerol and 0.4-0.5mg/ml BSA	100 ul

Recombinant **RABBIT MONOCLONAL**

[Bulk quote request](#)

Availability	1-3 days
Species Reactivity	Human
Format	Purified
Host	Rabbit
Clonality	Recombinant Rabbit Monoclonal
Isotype	Rabbit IgG
Clone Name	29N05
Purity	Affinity chromatography
UniProt	P19338
Applications	Western Blot : 1:500-1:2000
Limitations	This NCL antibody is available for research use only.



Western blot testing of human HeLa cell lysate with NCL antibody. Predicted molecular weight ~77 kDa, commonly observed at 100~110 kDa.

Description

Nucleolin is the major nucleolar protein of growing eukaryotic cells. It is found associated with intranucleolar chromatin and pre-ribosomal particles. It induces chromatin decondensation by binding to histone H1. It is thought to play a role in pre-rRNA transcription and ribosome assembly. May play a role in the process of transcriptional elongation. Binds RNA oligonucleotides with 5'-UUAGGG-3' repeats more tightly than the telomeric single-stranded DNA 5'-TTAGGG-3' repeats. [UniProt]

Application Notes

Optimal dilution of the NCL antibody should be determined by the researcher.

Immunogen

A synthetic peptide specific to human Nucleolin protein was used as the immunogen for the NCL antibody.

Storage

Store the NCL antibody at -20oC.