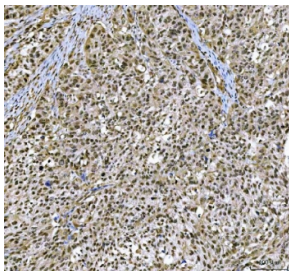


## NCBP2 Antibody / Nuclear cap-binding protein subunit 2 / CBP20 (RQ8365)

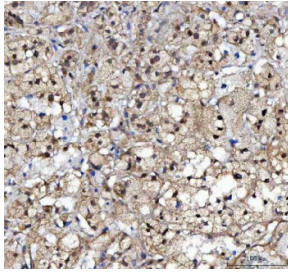
Catalog No.	Formulation	Size
RQ8365	0.5mg/ml if reconstituted with 0.2ml sterile DI water	100 ug

[Bulk quote request](#)

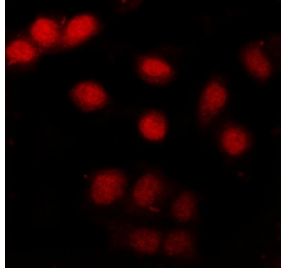
<b>Availability</b>	1-3 business days
<b>Species Reactivity</b>	Human, Mouse, Rat
<b>Format</b>	Antigen affinity purified
<b>Host</b>	Rabbit
<b>Clonality</b>	Polyclonal (rabbit origin)
<b>Isotype</b>	Rabbit IgG
<b>Purity</b>	Antigen affinity purified
<b>Buffer</b>	Lyophilized from 1X PBS with 2% Trehalose
<b>UniProt</b>	P52298
<b>Localization</b>	Nuclear, cytoplasmic
<b>Applications</b>	Western Blot : 0.5-1ug/ml Immunohistochemistry (FFPE) : 2-5ug/ml Immunofluorescence : 5ug/ml Flow Cytometry : 1-3ug/million cells ELISA : 0.1-0.5ug/ml
<b>Limitations</b>	This NCBP2 antibody is available for research use only.



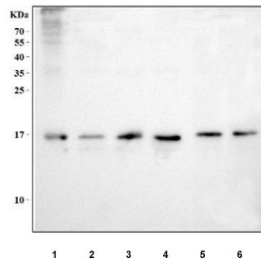
IHC staining of FFPE human bladder urothelial carcinoma tissue with c-Kit antibody.  
HIER: boil tissue sections in pH8 EDTA for 20 min and allow to cool before testing.



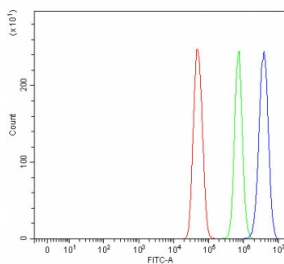
IHC staining of FFPE human adrenocortical adenoma tissue with c-Kit antibody. HIER: boil tissue sections in pH8 EDTA for 20 min and allow to cool before testing.



Immunofluorescent staining of FFPE human A549 cells with NCBP2 antibody (red). HIER: steam section in pH6 citrate buffer for 20 min.



Western blot testing of 1) human CCRF-CEM, 2) human HeLa, 3) human U-251, 4) human SH-SY5Y, 5) rat C6 and 6) mouse NIH 3T3 cell lysate with NCBP2 antibody. Predicted molecular weight ~18 kDa.



Flow cytometry testing of fixed and permeabilized human U-251 cells with NCBP2 antibody at 1ug/million cells (blocked with goat sera); Red=cells alone, Green=isotype control, Blue= NCBP2 antibody.

## Description

The product of this gene is a component of the nuclear cap-binding protein complex (CBC), which binds to the monomethylated 5' cap of nascent pre-mRNA in the nucleoplasm. The encoded protein has an RNP domain commonly found in RNA binding proteins, and contains the cap-binding activity. The CBC promotes pre-mRNA splicing, 3'-end processing, RNA nuclear export, and nonsense-mediated mRNA decay. Multiple transcript variants encoding different isoforms have been found for this gene.

## Application Notes

Optimal dilution of the NCBP2 antibody should be determined by the researcher.

## Immunogen

An E.coli-derived human recombinant protein (S2-N102) was used as the immunogen for the NCBP2 antibody.

## Storage

After reconstitution, the NCBP2 antibody can be stored for up to one month at 4oC. For long-term, aliquot and store at -20oC. Avoid repeated freezing and thawing.

