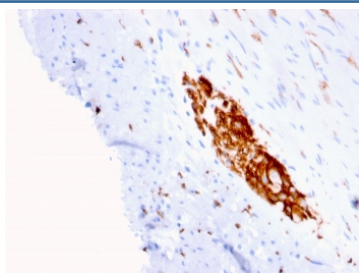


## NCAM Antibody / CD56 [clone ERIC-1] (V7973)

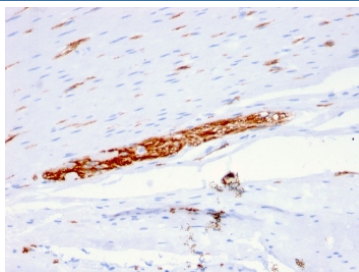
Catalog No.	Formulation	Size
V7973-100UG	0.2 mg/ml in 1X PBS with 0.1 mg/ml BSA (US sourced) and 0.05% sodium azide	100 ug
V7973-20UG	0.2 mg/ml in 1X PBS with 0.1 mg/ml BSA (US sourced) and 0.05% sodium azide	20 ug
V7973SAF-100UG	1 mg/ml in 1X PBS; BSA free, sodium azide free	100 ug

[Bulk quote request](#)

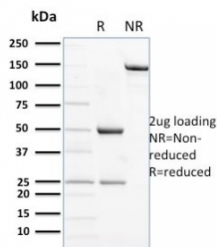
<b>Availability</b>	1-3 business days
<b>Species Reactivity</b>	Human, Rat
<b>Format</b>	Purified
<b>Host</b>	Mouse
<b>Clonality</b>	Monoclonal (mouse origin)
<b>Isotype</b>	Mouse IgG1, kappa
<b>Clone Name</b>	ERIC-1
<b>Purity</b>	Protein G affinity chromatography
<b>UniProt</b>	P13591
<b>Localization</b>	Cell surface
<b>Applications</b>	Immunohistochemistry (FFPE) : 0.1-0.2ug/ml
<b>Limitations</b>	This NCAM antibody is available for research use only.



IHC staining of FFPE human colon with NCAM antibody (clone ERIC-1). HIER: boil tissue sections in pH 9 10mM Tris with 1mM EDTA for 20 min and allow to cool before testing.



IHC staining of FFPE human colon with NCAM antibody (clone ERIC-1). HIER: boil tissue sections in pH 9 10mM Tris with 1mM EDTA for 20 min and allow to cool before testing.



SDS-PAGE analysis of purified, BSA-free NCAM antibody (clone ERIC-1) as confirmation of integrity and purity.

## Description

This MAb reacts with an extracellular domain (close to transmembrane) of CD56/NCAM. Three isoforms of neural cell adhesion molecule (NCAM) are produced by differential splicing of the RNA transcript from a single gene. The 135kDa isoform is the basic molecule, which is glycosylated or sialylated to produce the mature species. Anti-CD56 recognizes two proteins of the neural cell adhesion molecule, the basic molecule expressed on most neuroectodermally derived tissues and neoplasms (e.g. retinoblastoma, medulloblastomas, astrocytomas, neuroblastomas, and small cell carcinomas). It is also expressed on some mesodermally derived tumors (rhabdomyosarcoma). Anti-CD56 plays an important role in the diagnosis of nodal and nasal NK/T-cell lymphomas.

## Application Notes

Optimal dilution of the NCAM antibody should be determined by the researcher.

## Immunogen

A recombinant human protein was used as the immunogen for this NCAM antibody.

## Storage

Store the NCAM antibody at 2-8°C (with azide) or aliquot and store at -20°C or colder (without azide).