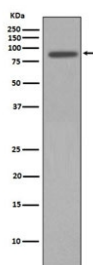


## NBS1 Antibody / NBN [clone COF-14] (RQ4767)

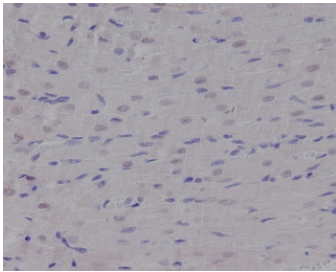
Catalog No.	Formulation	Size
RQ4767	Antibody in PBS with 0.02% sodium azide, 50% glycerol and 0.4-0.5mg/ml BSA	100 ul

[Bulk quote request](#)

Availability	1-2 weeks
Species Reactivity	Human, Rat
Format	Purified
Host	Rabbit
Clonality	Rabbit Monoclonal
Isotype	Rabbit IgG
Clone Name	COF-14
Purity	Affinity purified
UniProt	O60934
Localization	Nuclear
Applications	Western Blot : 1:1000-1:2000 Immunohistochemistry (FFPE) : 1:50-1:200
Limitations	This NBS1 antibody is available for research use only.



Western blot testing of human HeLa cell lysate with NBS1 antibody. Predicted molecular weight ~95 kDa.



IHC staining of FFPE rat heart tissue with NBS1 antibody. HIER: boil tissue sections in pH6, 10mM citrate buffer, for 10-20 min and allow to cool before testing.

## Description

Nijmegen breakage syndrome protein 1 (NBS1) is a component of the MRE11-RAD50-NBN (MRN complex) which plays a critical role in the cellular response to DNA damage and the maintenance of chromosome integrity. The complex is involved in double-strand break (DSB) repair, DNA recombination, maintenance of telomere integrity, cell cycle checkpoint control and meiosis. [UniProt]

## Application Notes

Optimal dilution of the NBS1 antibody should be determined by the researcher.

## Immunogen

A synthetic peptide specific to human NBS1 / NBN was used as the immunogen for the NBS1 antibody.

## Storage

Store the NBS1 antibody at -20oC.