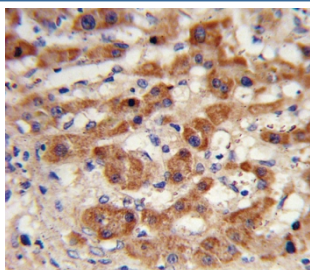


NAT2 Antibody / Arylamine N-acetyltransferase 2 (F54905)

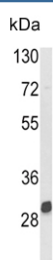
Catalog No.	Formulation	Size
F54905-0.4ML	In 1X PBS, pH 7.4, with 0.09% sodium azide	0.4 ml
F54905-0.08ML	In 1X PBS, pH 7.4, with 0.09% sodium azide	0.08 ml

[Bulk quote request](#)

Availability	1-3 business days
Species Reactivity	Human, Mouse
Format	Purified
Clonality	Polyclonal (rabbit origin)
Isotype	Rabbit Ig
Purity	Antigen affinity purified
UniProt	P11245
Localization	Cytoplasmic
Applications	Flow Cytometry : 1:10-1:50(1x10e6 cells) Immunohistochemistry (FFPE) : 1:10-1:50 Western Blot : 1:500-1:1000
Limitations	This NAT2 antibody is available for research use only.



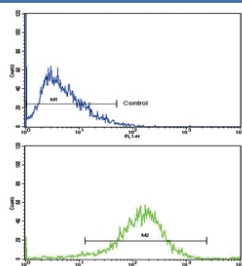
IHC testing of FFPE human hepatocellular carcinoma tissue with NAT antibody. HIER: steam section in pH6 citrate buffer for 20 min and allow to cool prior to staining.



Western blot testing of mouse kidney tissue lysate with NAT2 antibody. Predicted molecular weight ~33 kDa.



Western blot testing of 1) non-transfected and 2) transfected 293 cell lysate with NAT2 antibody.



Flow cytometry testing of human HepG2 cells with NAT2 antibody; Blue=isotype control, Green= NAT2 antibody.

Description

NAT2 is an enzyme that functions to both activate and deactivate arylamine and hydrazine drugs and carcinogens.

Application Notes

The stated application concentrations are suggested starting points. Titration of the NAT2 antibody may be required due to differences in protocols and secondary/substrate sensitivity.

Immunogen

A portion of amino acids 226-254 from the human protein was used as the immunogen for the NAT2 antibody.

Storage

Aliquot the NAT2 antibody and store frozen at -20oC or colder. Avoid repeated freeze-thaw cycles.