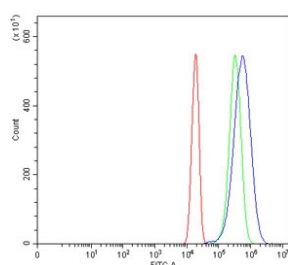


NARF Antibody / NLK-associated RING finger protein / RNF138 (RQ7541)

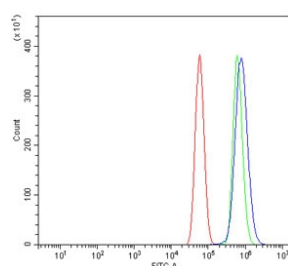
Catalog No.	Formulation	Size
RQ7541	0.5mg/ml if reconstituted with 0.2ml sterile DI water	100 ug

Bulk quote request

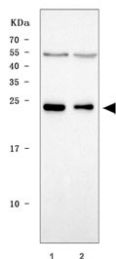
Availability	1-3 business days
Species Reactivity	Human
Format	Antigen affinity purified
Clonality	Polyclonal (rabbit origin)
Isotype	Rabbit IgG
Purity	Antigen affinity purified
Buffer	Lyophilized from 1X PBS with 2% Trehalose
UniProt	Q8WVD3
Applications	Western Blot : 0.5-1ug/ml Flow Cytometry : 1-3ug/million cells Direct ELISA : 0.1-0.5ug/ml
Limitations	This NARF antibody is available for research use only.



Flow cytometry testing of human U-2 OS cells with NARF antibody at 1ug/million cells (blocked with goat sera); Red=cells alone, Green=isotype control, Blue= NARF antibody.



Flow cytometry testing of human U-87 MG cells with NARF antibody at 1ug/million cells (blocked with goat sera); Red=cells alone, Green=isotype control, Blue= NARF antibody.



Western blot testing of human 1) MOLT4 and 2) U937 cell lysate with NARF antibody.
Predicted molecular weight ~28 kDa.

Description

The protein encoded by this gene contains a RING finger, a motif present in a variety of functionally distinct proteins and known to be involved in protein-DNA and protein-protein interactions. Alternatively spliced transcript variants encoding distinct isoforms have been observed.

Application Notes

Optimal dilution of the NARF antibody should be determined by the researcher.

Immunogen

E. coli-derived recombinant human protein (amino acids H210-I245) was used as the immunogen for the NARF antibody.

Storage

After reconstitution, the NARF antibody can be stored for up to one month at 4°C. For long-term, aliquot and store at -20°C. Avoid repeated freezing and thawing.