

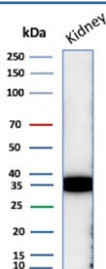
Napsin A Antibody [clone NAPSA/7165R] (V4647)

Catalog No.	Formulation	Size
V4647-100UG	0.2 mg/ml in 1X PBS with 0.1 mg/ml BSA (US sourced), 0.05% sodium azide	100 ug
V4647-20UG	0.2 mg/ml in 1X PBS with 0.1 mg/ml BSA (US sourced), 0.05% sodium azide	20 ug
V4647SAF-100UG	1 mg/ml in 1X PBS; BSA free, sodium azide free	100 ug

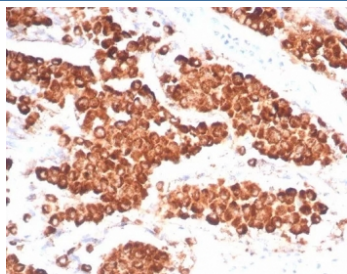
Recombinant **RABBIT MONOCLONAL**

[Bulk quote request](#)

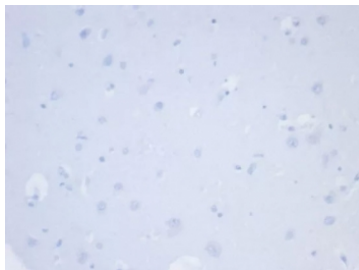
Availability	1-3 business days
Species Reactivity	Human
Format	Purified
Clonality	Recombinant Rabbit Monoclonal
Isotype	Rabbit IgG, kappa
Clone Name	NAPSA/7165R
Purity	Protein A affinity
UniProt	O96009
Localization	Cytoplasm
Applications	Western Blot : 2-4ug/ml Immunohistochemistry (FFPE) : 1-2ug/ml for 30 min at RT
Limitations	This Napsin A antibody is available for research use only.



Western blot testing of human kidney tissue lysate with Napsin A antibody. Expected molecular weight: 38-45 kDa.



IHC staining of FFPE human lung adenocarcinoma tissue with NAPSA antibody (clone NAPSA/7165R) at 2ug/ml. HIER: boil tissue sections in pH 9 10mM Tris with 1mM EDTA for 20 min and allow to cool before testing.



Negative control: IHC testing of FFPE human brain tissue with NAPSA antibody (clone NAPSA/7165R) at 2ug/ml. HIER: boil tissue sections in pH 9 10mM Tris with 1mM EDTA for 20 min and allow to cool before testing.

Description

Napsin is a pepsin-like aspartic proteinase connected with maturation of surfactant protein B. There are two closely related napsins, napsin A and napsin B. Napsin A is expressed as a single chain protein. Immunohistochemical studies revealed high expression levels of napsin A in human lung and kidney but low expression in spleen. Napsin A is expressed in type II pneumocytes and in adenocarcinomas of lung. The high specificity expression of napsin A in adenocarcinomas of lung is useful to distinguish primary lung adenocarcinomas from adenocarcinomas of other organs.

Application Notes

Optimal dilution of the Napsin A antibody should be determined by the researcher.

Immunogen

A recombinant partial protein sequence (within amino acids 50-150) from the human protein was used as the immunogen for the Napsin A antibody.

Storage

Aliquot the Napsin A antibody and store frozen at -20°C or colder. Avoid repeated freeze-thaw cycles.