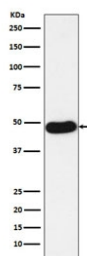


Napsin A Antibody [clone AFBB-14] (RQ4825)

Catalog No.	Formulation	Size
RQ4825	Antibody in PBS with 0.02% sodium azide, 50% glycerol and 0.4-0.5mg/ml BSA	100 ul

[Bulk quote request](#)

Availability	1-2 weeks
Species Reactivity	Human
Format	Purified
Host	Rabbit
Clonality	Rabbit Monoclonal
Isotype	Rabbit IgG
Clone Name	AFBB-14
Purity	Affinity purified
UniProt	O96009
Applications	Western Blot : 1:1000-1:5000
Limitations	This Napsin A antibody is available for research use only.



Western blot testing of human lung adenocarcinoma lysate with Napsin A antibody.
Expected molecular weight: 38-45 kDa depending on glycosylation level.

Description

Napsin A may play a role in the proteolytic processing of pulmonary surfactant protein B in the lung and may function in protein catabolism in the renal proximal tubules. [RefSeq]

Application Notes

Optimal dilution of the Napsin A antibody should be determined by the researcher.

Immunogen

A synthetic peptide specific to human Napsin A / NAPSA was used as the immunogen for the Napsin A antibody.

Storage

Store the Napsin A antibody at -20oC.