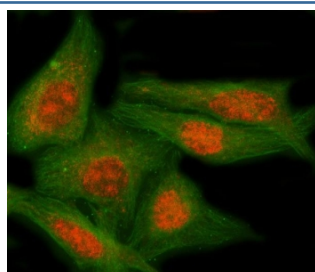


NAP1L5 Antibody / Nucleosome assembly protein 1-like 5 (RQ8438)

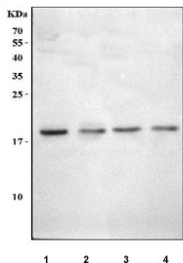
Catalog No.	Formulation	Size
RQ8438	0.5mg/ml if reconstituted with 0.2ml sterile DI water	100 ug

Bulk quote request

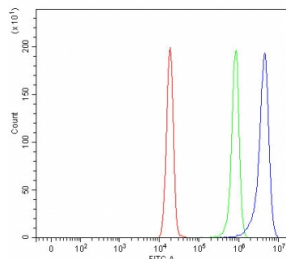
Availability	1-3 business days
Species Reactivity	Human, Mouse, Rat
Format	Antigen affinity purified
Host	Rabbit
Clonality	Polyclonal (rabbit origin)
Isotype	Rabbit IgG
Purity	Antigen affinity purified
Buffer	Lyophilized from 1X PBS with 2% Trehalose
UniProt	Q96NT1
Localization	Nuclear
Applications	Western Blot : 0.5-1ug/ml Immunofluorescence : 5ug/ml Flow Cytometry : 1-3ug/million cells
Limitations	This NAP1L5 antibody is available for research use only.



Immunofluorescent staining of FFPE human HeLa cells with NAP1L5 antibody (red) and Beta Tubulin mAb (green). HIER: steam section in pH6 citrate buffer for 20 min.



Western blot testing of 1) human SH-SY5Y, 2) human HEL, 3) rat C6 and 4) mouse EL-4 cell lysate with NAP1L5 antibody. Predicted molecular weight ~20 kDa.



Flow cytometry testing of fixed and permeabilized human HeLa cells with NAP1L5 antibody at 1ug/million cells (blocked with goat sera); Red=cells alone, Green=isotype control, Blue= NAP1L5 antibody.

Description

This gene encodes a protein that shares sequence similarity to nucleosome assembly factors, but may be localized to the cytoplasm rather than the nucleus. Expression of this gene is downregulated in hepatocellular carcinomas. This gene is located within a differentially methylated region (DMR) and is imprinted and paternally expressed. There is a related pseudogene on chromosome 4.

Application Notes

Optimal dilution of the NAP1L5 antibody should be determined by the researcher.

Immunogen

Amino acids CRVLALKKLQKRCDKIEAKFDK were used as the immunogen for the NAP1L5 antibody.

Storage

After reconstitution, the NAP1L5 antibody can be stored for up to one month at 4oC. For long-term, aliquot and store at -20oC. Avoid repeated freezing and thawing.