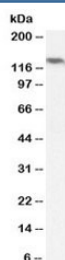


NALP5 Antibody / NLRP5 (R36425)

Catalog No.	Formulation	Size
R36425-100UG	0.5 mg/ml in 1X TBS, pH7.3, with 0.5% BSA (US sourced) and 0.02% sodium azide	100 ug

[Bulk quote request](#)

Availability	1-3 business days
Species Reactivity	Human
Format	Antigen affinity purified
Clonality	Polyclonal (goat origin)
Isotype	Goat Ig
Purity	Antigen affinity
Gene ID	126206
Applications	Western Blot : 1-3ug/ml ELISA (peptide) : 1:128000
Limitations	This NALP5 antibody is available for research use only.



Western blot testing of human ovary lysate with NALP5 antibody at 2ug/ml. Predicted molecular weight ~134 kDa.

Description

Additional name(s) for this target protein: NLRP5; NLR family, pyrin domain containing 5; MATER

Application Notes

Optimal dilution of the NALP5 antibody should be determined by the researcher.

Immunogen

Amino acids DGSWHSFDEDDR were used as the immunogen for this NALP5 antibody.

Storage

Aliquot and store the NALP5 antibody at -20oC.