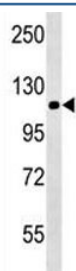


## NALP12 Antibody (NLRP12) [clone 228CT4.1.3] (F40258)

Catalog No.	Formulation	Size
F40258-0.4ML	In 1X PBS, pH 7.4, with 0.09% sodium azide	0.4 ml
F40258-0.08ML	In 1X PBS, pH 7.4, with 0.09% sodium azide	0.08 ml

[Bulk quote request](#)

<b>Availability</b>	1-3 business days
<b>Species Reactivity</b>	Mouse
<b>Format</b>	Purified
<b>Clonality</b>	Monoclonal (mouse origin)
<b>Isotype</b>	Mouse IgM, k
<b>Clone Name</b>	228CT4.1.3
<b>Purity</b>	Purified
<b>UniProt</b>	P59046
<b>Applications</b>	Western Blot : 1:500-1:1500
<b>Limitations</b>	This NALP12 antibody is available for research use only.



NALP12 antibody western blot analysis in mouse brain tissue lysate. Predicted molecular weight: ~119kDa, routinely observed at 100~119kDa.

### Description

This gene encodes a member of the CATERPILLER family of cytoplasmic proteins. The encoded protein, which contains an N-terminal pyrin domain, a NACHT domain, a NACHT-associated domain, and a C-terminus leucine-rich repeat region, functions as an attenuating factor of inflammation by suppressing inflammatory responses in activated monocytes. Alternatively spliced transcript variants encoding distinct isoforms have been described but the full-length nature of some of these has not been determined.

### Application Notes

The stated application concentrations are suggested starting points. Titration of the NALP12 antibody may be required due to differences in protocols and secondary/substrate sensitivity.

## **Immunogen**

This NALP12 antibody was produced from a mouse immunized with NLRP12/NALP12 recombinant protein.

## **Storage**

Store at 4°C for up to one month. For long term, aliquot the NALP12 antibody and store frozen at -20°C or colder. Avoid repeated freeze-thaw cycles.