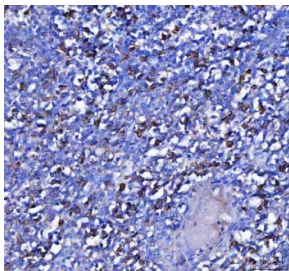


MZB1 Antibody / Marginal zone B- and B1-cell-specific protein (RQ8576)

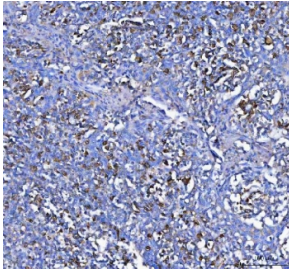
Catalog No.	Formulation	Size
RQ8576	0.5mg/ml if reconstituted with 0.2ml sterile DI water	100 ug

Bulk quote request

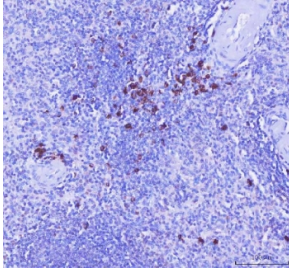
Availability	1-3 days
Species Reactivity	Human
Format	Antigen affinity purified
Host	Rabbit
Clonality	Polyclonal (rabbit origin)
Isotype	Rabbit IgG
Purity	Antigen affinity purified
Buffer	Lyophilized from 1X PBS with 2% Trehalose
UniProt	Q8WU39
Localization	Cytoplasm, secreted
Applications	Western Blot : 0.5-1ug/ml Immunohistochemistry (FFPE) : 2-5ug/ml Immunofluorescence : 5ug/ml Flow Cytometry : 1-3ug/million cells ELISA : 0.1-0.5ug/ml
Limitations	This MZB1 antibody is available for research use only.



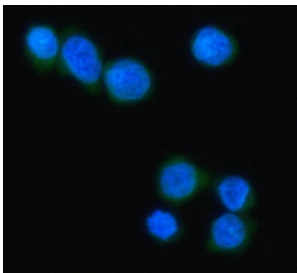
IHC staining of FFPE human tonsil tissue with MZB1 antibody. HIER: boil tissue sections in pH8 EDTA for 20 min and allow to cool before testing.



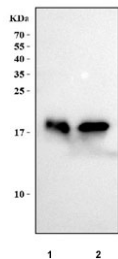
IHC staining of FFPE human tonsil tissue with MZB1 antibody. HIER: boil tissue sections in pH8 EDTA for 20 min and allow to cool before testing.



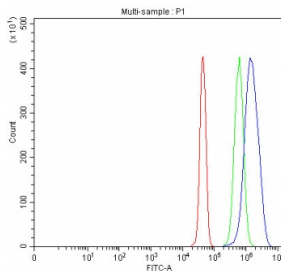
IHC staining of FFPE human spleen tissue with MZB1 antibody. HIER: boil tissue sections in pH8 EDTA for 20 min and allow to cool before testing.



Immunofluorescent staining of FFPE human Jurkat cells with MZB1 antibody (green) and DAPI nuclear stain (blue). HIER: steam section in pH6 citrate buffer for 20 min.



Western blot testing of human 1) Raji and 2) Jurkat cell lysate with MZB1 antibody. Predicted molecular weight ~21 kDa with multiple smaller isoforms.



Flow cytometry testing of fixed and permeabilized human JK cells with MZB1 antibody at 1ug/million cells (blocked with goat sera); Red=cells alone, Green=isotype control, Blue=MZB1 antibody.

Description

Marginal zone B and B1 cell-specific protein is a protein that in humans is encoded by the MZB1 gene. MZB1, also named PACAP, MGC29506 and pERp1, belongs to the PERP1 family. It is associated with immunoglobulin M (IgM) heavy and light chains and promotes IgM assembly and secretion. MGC29506(PACAP) may exert its effect by acting as a molecular chaperone or as an oxidoreductase as it displays a low level of oxidoreductase activity. Isoform 2 may be involved in regulation of apoptosis. (PubMed: 11350957) MZB1 has 5 isoforms with MW 21kd and 7-13kd.

Application Notes

Optimal dilution of the MZB1 antibody should be determined by the researcher.

Immunogen

An E.coli-derived human recombinant protein (amino acids D23-L189) was used as the immunogen for the MZB1 antibody.

Storage

After reconstitution, the MZB1 antibody can be stored for up to one month at 4oC. For long-term, aliquot and store at -20oC. Avoid repeated freezing and thawing.