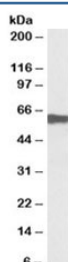


## Myotilin Antibody (R33640)

Catalog No.	Formulation	Size
R33640-100UG	0.5 mg/ml in 1X TBS, pH7.3, with 0.5% BSA (US sourced) and 0.02% sodium azide	100 ug

[Bulk quote request](#)

Availability	1-3 business days
Species Reactivity	Human
Format	Antigen affinity purified
Host	Goat
Clonality	Polyclonal (goat origin)
Isotype	Goat Ig
Purity	Antigen affinity
Gene ID	9499
Applications	Western Blot : 0.1-0.3ug/ml ELISA (peptide) LOD : 1:128000
Limitations	This Myotilin antibody is available for research use only.



Western blot testing of human skeletal muscle lysate with Myotilin antibody at 0.1ug/ml.  
Predicted molecular weight: ~55/35kDa (isoforms 1/2).

## Description

Additional name(s) for this target protein: MYOT

## Application Notes

Optimal dilution of the Myotilin antibody should be determined by the researcher.

## Immunogen

Amino acids DSQQHNSEHARLQ were used as the immunogen for this Myotilin antibody.

## **Storage**

Aliquot and store the Myotilin antibody at -20oC.