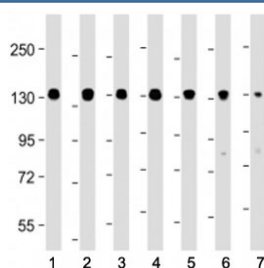


## Myosin Phosphatase Antibody / MYPT1 / PPP1R12A (F54070)

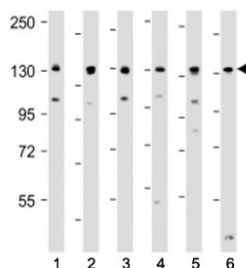
Catalog No.	Formulation	Size
F54070-0.2ML	In 1X PBS, pH 7.4, with 0.09% sodium azide	0.2 ml
F54070-0.05ML	In 1X PBS, pH 7.4, with 0.09% sodium azide	0.05 ml

[Bulk quote request](#)

<b>Availability</b>	1-3 business days
<b>Species Reactivity</b>	Human, Mouse
<b>Format</b>	Antigen affinity purified
<b>Clonality</b>	Polyclonal (rabbit origin)
<b>Isotype</b>	Rabbit Ig
<b>Purity</b>	Antigen affinity
<b>UniProt</b>	O14974
<b>Applications</b>	Western Blot : 1:4000
<b>Limitations</b>	This Myosin Phosphatase antibody is available for research use only.



Western blot testing of Myosin Phosphatase antibody at 1:4000: Lane 1) human HEK293, 2) (h) HeLa, 3) (h) HT-29, 4) (h) MCF-7, 5) mouse C2C12, 6) (m) NIH3T3 and 7) (m) uterus lysate. Predicted molecular weight ~115 kDa.



Western blot testing of Myosin Phosphatase antibody at 1:4000: Lane 1) human HEK293, 2) (h) HeLa, 3) (h) HT-29, 4) (h) MCF-7, 5) mouse NIH3T3 and 6) (m) C2C12 cell lysate. Predicted molecular weight ~115 kDa.

## Description

Key regulator of protein phosphatase 1C (PPP1C). Mediates binding to myosin. As part of the PPP1C complex, involved in dephosphorylation of PLK1. Capable of inhibiting HIF1AN- dependent suppression of HIF1A activity. [UniProt]

## Application Notes

The stated application concentrations are suggested starting points. Titration of the Myosin Phosphatase antibody may be required due to differences in protocols and secondary/substrate sensitivity.

## Immunogen

A portion of amino acids 481-514 from the human MYPT1 was used as the immunogen for the Myosin Phosphatase antibody.

## Storage

Aliquot the Myosin Phosphatase antibody and store frozen at -20oC or colder. Avoid repeated freeze-thaw cycles.