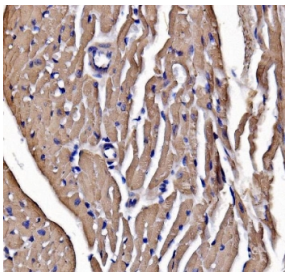


Myosin Heavy Chain 3 Antibody / MYH3 / Myosin 3 (RQ6720)

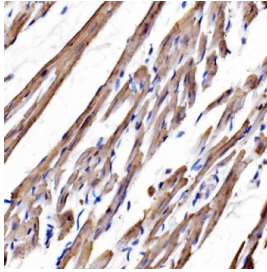
Catalog No.	Formulation	Size
RQ6720	0.5mg/ml if reconstituted with 0.2ml sterile DI water	100 ug

Bulk quote request

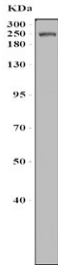
Availability	1-3 business days
Species Reactivity	Human, Mouse, Rat
Format	Antigen affinity purified
Clonality	Polyclonal (rabbit origin)
Isotype	Rabbit IgG
Purity	Antigen affinity purified
Buffer	Lyophilized from 1X PBS with 2% Trehalose
UniProt	P12847
Localization	Cytoplasmic
Applications	Western Blot : 1-2ug/ml Immunohistochemistry (FFPE) : 2-5ug/ml Flow Cytometry : 1-3ug/million cells Direct ELISA : 0.1-0.5ug/ml
Limitations	This Myosin Heavy Chain 3 antibody is available for research use only.



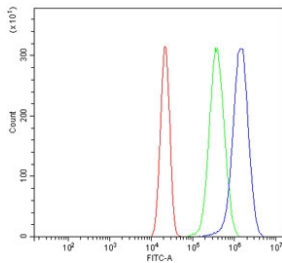
IHC staining of FFPE mouse heart tissue with Myosin Heavy Chain 3 antibody. HIER: boil tissue sections in pH8 EDTA for 20 min and allow to cool before testing.



IHC staining of FFPE rat heart tissue with Myosin Heavy Chain 3 antibody. HIER: boil tissue sections in pH8 EDTA for 20 min and allow to cool before testing.



Western blot testing of rat heart tissue with Myosin Heavy Chain 3 antibody. Predicted molecular weight ~224 kDa.



Flow cytometry testing of human U-2 OS cells with Myosin Heavy Chain 3 antibody at 1ug/million cells (blocked with goat sera); Red=cells alone, Green=isotype control, Blue=Myosin Heavy Chain 3 antibody.

Description

Myosin-3 is a protein that in humans is encoded by the MYH3 gene. Myosin is a major contractile protein which converts chemical energy into mechanical energy through the hydrolysis of ATP. Myosin is a hexameric protein composed of a pair of myosin heavy chains (MYH) and two pairs of nonidentical light chains. This gene is a member of the MYH family and encodes a protein with an IQ domain and a myosin head-like domain. Mutations in this gene have been associated with two congenital contracture (arthrogryposis) syndromes, Freeman-Sheldon syndrome and Sheldon-Hall syndrome.

Application Notes

Optimal dilution of the Myosin Heavy Chain 3 antibody should be determined by the researcher.

Immunogen

Recombinant rat protein (amino acids K44-S119) was used as the immunogen for the Myosin Heavy Chain 3 antibody.

Storage

After reconstitution, the Myosin Heavy Chain 3 antibody can be stored for up to one month at 4oC. For long-term, aliquot and store at -20oC. Avoid repeated freezing and thawing.

