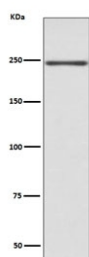


## Myosin 6 Antibody / MYH6 / MyHC-alpha [clone AOBH-13] (RQ5404)

Catalog No.	Formulation	Size
RQ5404	Antibody in PBS with 0.02% sodium azide, 50% glycerol and 0.4-0.5mg/ml BSA	100 ul

[Bulk quote request](#)

Availability	1-2 weeks
Species Reactivity	Human, Mouse, Rat
Format	Purified
Clonality	Rabbit Monoclonal
Isotype	Rabbit IgG
Clone Name	AOBH-13
Purity	Affinity purified
UniProt	P13533
Applications	Western Blot : 1:500-1:1000
Limitations	This MYH6 antibody is available for research use only.



Western blot testing of mouse heart lysate with MYH6 antibody. Predicted molecular weight ~224 kDa, routinely observed at 200-250 kDa.

### Description

Cardiac muscle myosin is a hexamer consisting of two heavy chain subunits, two light chain subunits, and two regulatory subunits. The MYH6 gene encodes the alpha heavy chain subunit of cardiac myosin. The gene is located approximately 4kb downstream of the gene encoding the beta heavy chain subunit of cardiac myosin. Mutations in this gene cause familial hypertrophic cardiomyopathy and atrial septal defect 3. [RefSeq]

### Application Notes

Optimal dilution of the MYH6 antibody should be determined by the researcher.

## Immunogen

A synthetic peptide specific to human Myosin 6 was used as the immunogen for the MYH6 antibody.

## Storage

Store the MYH6 antibody at -20oC.