

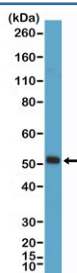
## Myogenin D1 Antibody / MyoD1 [clone RM369] (R20388)

Catalog No.	Formulation	Size
R20388-0.1ML	Antibody in PBS with 50% glycerol, 1% BSA and 0.09% sodium azide	100 ul

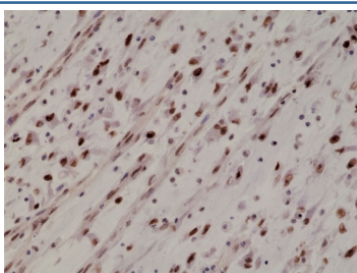
Recombinant **RABBIT MONOCLONAL**

[Bulk quote request](#)

<b>Availability</b>	1-3 business days
<b>Species Reactivity</b>	Human, Mouse, Rat
<b>Format</b>	Purified
<b>Host</b>	Rabbit
<b>Clonality</b>	Recombinant Rabbit Monoclonal
<b>Isotype</b>	Rabbit IgG
<b>Clone Name</b>	RM369
<b>Purity</b>	Protein A purified from animal origin-free supernatant
<b>UniProt</b>	P15172
<b>Applications</b>	Immunohistochemistry (FFPE) : 1:500-1:1000 Western Blot : 1:1000-1:2000
<b>Limitations</b>	This recombinant Myogenin D1 antibody is available for research use only.



Western blot testing of mouse skeletal muscle tissue with recombinant Myogenin D1 antibody at 1:2000 dilution. Expected molecular weight: 43-45 kDa



IHC staining of FFPE human Rhabdomyosarcoma tissue with recombinant Myogenin D1 antibody at 1:1000.

## Description

This antibody reacts to human, mouse, and rat MyoD1 (Myoblast determination protein 1).

## Application Notes

The stated application concentrations are suggested starting points. Titration of the recombinant Myogenin D1 antibody may be required due to differences in protocols and secondary/substrate sensitivity.

## Immunogen

A peptide corresponding to residues near N-terminus of human MyoD1 (Myoblast determination protein 1) was used as the immunogen for the recombinant Myogenin D1 antibody.

## Storage

Store the recombinant Myogenin D1 antibody at -20oC.