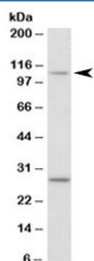


## Myo1H Antibody (R33739)

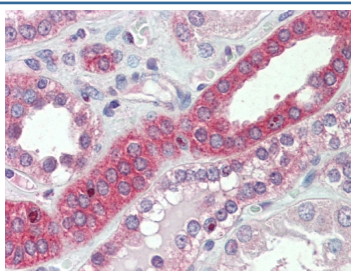
Catalog No.	Formulation	Size
R33739-100UG	0.5 mg/ml in 1X TBS, pH7.3, with 0.5% BSA (US sourced) and 0.02% sodium azide	100 ug

[Bulk quote request](#)

Availability	1-3 business days
Species Reactivity	Human, Mouse, Rat
Predicted Reactivity	Pig, Cow
Format	Antigen affinity purified
Clonality	Polyclonal (goat origin)
Isotype	Goat Ig
Purity	Antigen affinity
Gene ID	283446
Applications	Western Blot : 0.1-0.3ug/ml IHC (FFPE) : 5ug/ml ELISA (peptide) LOD : 1:128000
Limitations	This Myo1H antibody is available for research use only.



Western blot testing of NIH3T3 lysate with Myo1H antibody at 0.1ug/ml. The expected ~110 kDa band and the additional ~28 kDa band are both blocked by the immunizing peptide.



IHC testing of FFPE human kidney tissue with Myo1H antibody at 5ug/ml. Steamed antigen retrieval with citrate buffer pH 6, AP-staining.

## Description

Additional name(s) for this target protein: Myosin 1H

## Application Notes

Optimal dilution of the Myo1H antibody should be determined by the researcher.

## Immunogen

Amino acids EDQVYKDKNGQLR were used as the immunogen for this Myo1H antibody.

## Storage

Aliquot and store the Myo1H antibody at -20oC.