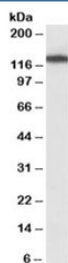


MYO1B Antibody / Myosin IB (R35800)

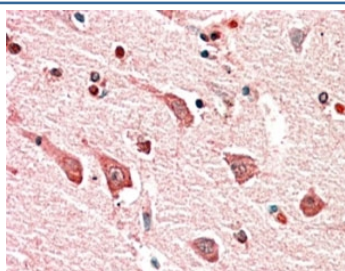
Catalog No.	Formulation	Size
R35800-100UG	0.5 mg/ml in 1X TBS, pH7.3, with 0.5% BSA (US sourced) and 0.02% sodium azide	100 ug

[Bulk quote request](#)

Availability	1-3 business days
Species Reactivity	Human, Mouse
Predicted Reactivity	Rat, Dog, Cow
Format	Antigen affinity purified
Clonality	Polyclonal (goat origin)
Isotype	Goat Ig
Purity	Antigen affinity
Gene ID	4430
Applications	Western Blot : 1-3ug/ml Immunohistochemistry (FFPE) : 5-10ug/ml ELISA (peptide) LOD : 1:16000
Limitations	This MYO1B antibody is available for research use only.



Western blot testing of NIH3T3 lysate with MYO1B antibody at 1ug/ml. Predicted molecular weight: ~125kDa.



IHC staining of FFPE human cerebral cortex with MYO1B antibody at 5ug/ml. HIER: steamed with pH6 citrate buffer, AP-staining.

Description

Additional name(s) for this target protein: Myosin IB, myosin 1b

Application Notes

Optimal dilution of the MYO1B antibody should be determined by the researcher.

Immunogen

Amino acids RTVEAKQEKVSTT were used as the immunogen for this MYO1B antibody.

Storage

Aliquot and store the MYO1B antibody at -20oC.