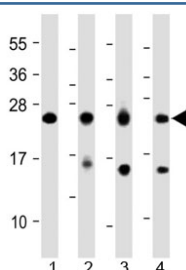


MYL1 Antibody (Center Region) (F54184)

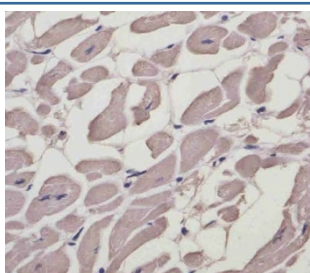
Catalog No.	Formulation	Size
F54184-0.2ML	In 1X PBS, pH 7.4, with 0.09% sodium azide	0.2 ml
F54184-0.05ML	In 1X PBS, pH 7.4, with 0.09% sodium azide	0.05 ml

Bulk quote request

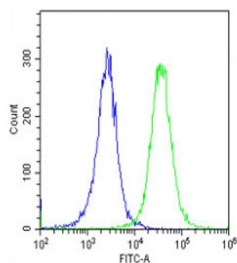
Availability	1-3 business days
Species Reactivity	Human, Mouse
Format	Antigen affinity purified
Clonality	Polyclonal (rabbit origin)
Isotype	Rabbit Ig
Purity	Antigen affinity
UniProt	P05976
Applications	Western Blot : 1:1000-1:2000 IHC (FFPE) : 1:25 Flow Cytometry : 1:25
Limitations	This MYL1 antibody is available for research use only.



Western blot testing of 1) human heart, 2) human skeletal muscle, 3) mouse skeletal muscle and 4) rat skeletal muscle lysate with MYL1 antibody at 1:2000. Predicted molecular weight ~21 kDa.



IHC staining of FFPE human heart with MYL1 antibody. HIER: boil tissue sections in pH6, 10mM citrate buffer, for 10-20 min and allow to cool before testing.



Flow cytometry testing of fixed and permeabilized human HeLa cells with MYL1 antibody (green) and isotype control (blue).

Description

Myosin light chain 1/3, skeletal muscle isoform, is the regulatory light chain of myosin. Does not bind calcium.

Application Notes

The stated application concentrations are suggested starting points. Titration of the MYL1 antibody may be required due to differences in protocols and secondary/substrate sensitivity.

Immunogen

A portion of amino acids 101-135 from human MYL1 was used as the immunogen for the MYL1 antibody.

Storage

Aliquot the MYL1 antibody and store frozen at -20oC or colder. Avoid repeated freeze-thaw cycles.