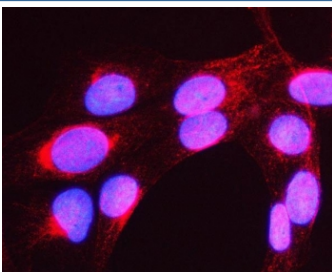


## MYH16 Antibody / Myosin 16 (RQ8442)

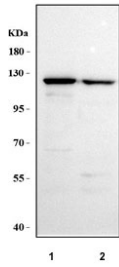
Catalog No.	Formulation	Size
RQ8442	0.5mg/ml if reconstituted with 0.2ml sterile DI water	100 ug

[Bulk quote request](#)

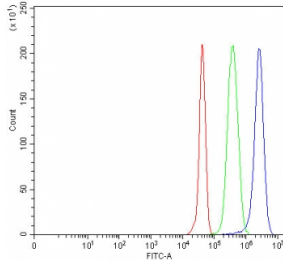
<b>Availability</b>	1-3 business days
<b>Species Reactivity</b>	Human
<b>Format</b>	Antigen affinity purified
<b>Host</b>	Rabbit
<b>Clonality</b>	Polyclonal (rabbit origin)
<b>Isotype</b>	Rabbit IgG
<b>Purity</b>	Antigen affinity purified
<b>Buffer</b>	Lyophilized from 1X PBS with 2% Trehalose
<b>UniProt</b>	Q9H6N6
<b>Applications</b>	Western Blot : 0.5-1ug/ml Immunofluorescence : 5ug/ml Flow Cytometry : 1-3ug/million cells ELISA : 0.1-0.5ug/ml
<b>Limitations</b>	This MYH16 antibody is available for research use only.



Immunofluorescent staining of FFPE human U-2 OS cells with MYH16 antibody (red) and DAPI nuclear stain (blue). HIER: steam section in pH6 citrate buffer for 20 min.



Western blot testing of human 1) A431 and 2) A549 cell lysate with MYH16 antibody.  
Predicted molecular weight ~128 kDa.



Flow cytometry testing of fixed and permeabilized human JK cells with MYH16 antibody at 1ug/million cells (blocked with goat sera); Red=cells alone, Green=isotype control, Blue= MYH16 antibody.

## Description

The MYH16 gene, encoding a sarcomeric myosin heavy chain expressed in nonhuman primate masticatory muscles, is inactivated in humans. Stedman et al. (2004) hypothesized that the decrement in masticatory muscle size caused by the inactivation of MYH16 removed an evolutionary constraint on encephalization in early man.

## Application Notes

Optimal dilution of the MYH16 antibody should be determined by the researcher.

## Immunogen

An E.coli-derived human recombinant protein (K405-A1073) was used as the immunogen for the MYH16 antibody.

## Storage

After reconstitution, the MYH16 antibody can be stored for up to one month at 4oC. For long-term, aliquot and store at -20oC. Avoid repeated freezing and thawing.