

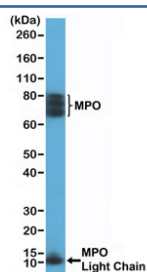
## Myeloperoxidase Antibody / MPO [clone RM407] (R20423)

Catalog No.	Formulation	Size
R20423-0.1ML	Antibody in PBS with 50% glycerol, 1% BSA and 0.09% sodium azide	100 ul

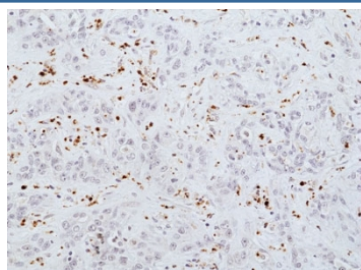
Recombinant **RABBIT MONOCLONAL**

[Bulk quote request](#)

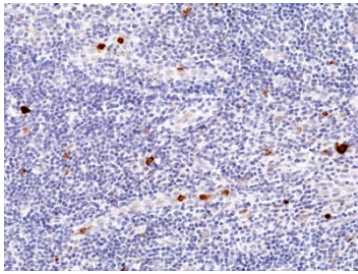
Availability	1-3 business days
Species Reactivity	Human
Format	Purified
Host	Rabbit
Clonality	Recombinant Rabbit Monoclonal
Isotype	Rabbit IgG
Clone Name	RM407
Purity	Protein A purified from animal origin-free supernatant
UniProt	P05164
Localization	Nuclear and cytoplasmic
Applications	Immunohistochemistry (FFPE) : 1:100-1:200 Western Blot : 1:200-1:500
Limitations	This recombinant Myeloperoxidase antibody is available for research use only.



Western blot testing of human HL60 cell lysate with recombinant Myeloperoxidase antibody at 1:200 dilution. Expected molecular weight: ~13 kDa (light/beta chain), ~73 kDa (heavy/alpha chain + light/beta chain), ~150 kDa (mature form). The protein may be observed at higher molecular weights due to glycosylation.



IHC staining of FFPE human cholangiocarcinoma tissue with recombinant Myeloperoxidase antibody at 1:100.



IHC staining of FFPE human tonsil tissue with recombinant Myeloperoxidase antibody at 1:100.

## Description

This antibody reacts to human to MPO/Myeloperoxidase.

## Application Notes

The stated application concentrations are suggested starting points. Titration of the recombinant Myeloperoxidase antibody may be required due to differences in protocols and secondary/substrate sensitivity.

## Immunogen

A peptide corresponding to the internal region of light chain on Myeloperoxidase/MPO was used as the immunogen for the recombinant Myeloperoxidase antibody.

## Storage

Store the recombinant Myeloperoxidase antibody at -20oC.