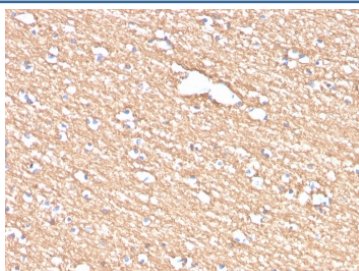


Myelin PLP Antibody [clone PLP1/4259] (V8681)

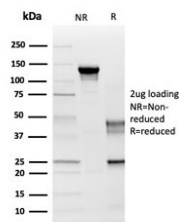
Catalog No.	Formulation	Size
V8681-100UG	0.2 mg/ml in 1X PBS with 0.1 mg/ml BSA (US sourced) and 0.05% sodium azide	100 ug
V8681-20UG	0.2 mg/ml in 1X PBS with 0.1 mg/ml BSA (US sourced) and 0.05% sodium azide	20 ug
V8681SAF-100UG	1 mg/ml in 1X PBS; BSA free, sodium azide free	100 ug

Bulk quote request

Availability	1-3 business days
Species Reactivity	Human
Format	Purified
Clonality	Monoclonal (mouse origin)
Isotype	Mouse IgG2a
Clone Name	PLP1/4259
Purity	Protein G affinity chromatography
UniProt	P60201
Localization	Membrane
Applications	Immunohistochemistry (FFPE) : 1-2ug/ml for 30 minutes at RT
Limitations	This Myelin PLP antibody is available for research use only.



IHC staining of FFPE human brain with Myelin PLP antibody (clone PLP1/4259). HIER: boil tissue sections in pH 9 10mM Tris with 1mM EDTA for 20 min and allow to cool before testing.



SDS-PAGE analysis of purified, BSA-free Myelin PLP antibody (clone PLP1/4259) as confirmation of integrity and purity.

Description

Proteolipid protein (PLP) is the major myelin protein of the CNS and plays an important role in the formation and maintenance of myelin. PLP may play a role in the compaction and stabilization of myelin sheaths, as well as in oligodendrocyte development and axonal survival. Mutations in PLP gene can lead to dysmyelinating diseases.

Application Notes

Optimal dilution of the Myelin PLP antibody should be determined by the researcher.

Immunogen

A synthetic peptide from the C terminal region of the human protein was used as the immunogen for the Myelin PLP antibody. The epitope has been mapped to amino acids GRGTKF.

Storage

Store the Myelin PLP antibody at 2-8oC (with azide) or aliquot and store at -20oC or colder (without azide).