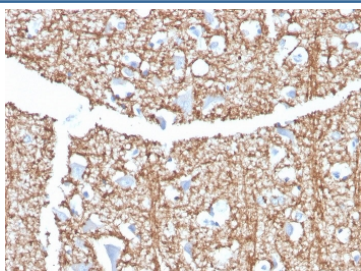


Myelin Basic Protein Antibody [clone MBP/4273] (V8677)

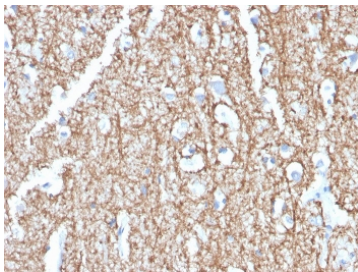
Catalog No.	Formulation	Size
V8677-100UG	0.2 mg/ml in 1X PBS with 0.1 mg/ml BSA (US sourced) and 0.05% sodium azide	100 ug
V8677-20UG	0.2 mg/ml in 1X PBS with 0.1 mg/ml BSA (US sourced) and 0.05% sodium azide	20 ug
V8677SAF-100UG	1 mg/ml in 1X PBS; BSA free, sodium azide free	100 ug

[Bulk quote request](#)

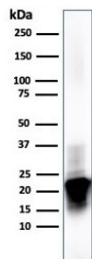
Availability	1-3 business days
Species Reactivity	Human, Mouse
Format	Purified
Host	Rat
Clonality	Monoclonal (rat origin)
Isotype	Rat IgG2a
Clone Name	MBP/4273
Purity	Protein G affinity chromatography
UniProt	P02686
Localization	Cell surface, cytoplasm
Applications	Western Blot : 1-2ug/ml Immunohistochemistry (FFPE) : 1-2ug/ml for 30 minutes at RT
Limitations	This Myelin Basic Protein antibody is available for research use only.



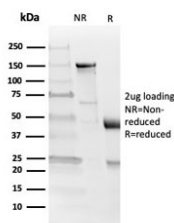
IHC staining of FFPE human brain with Myelin Basic Protein antibody (clone MBP/4273).
HIER: boil tissue sections in pH 9 10mM Tris with 1mM EDTA for 20 min and allow to cool before testing.



IHC staining of FFPE human brain with Myelin Basic Protein antibody (clone MBP/4273).
HIER: boil tissue sections in pH 9 10mM Tris with 1mM EDTA for 20 min and allow to cool before testing.



Western blot testing of human brain lysate with Myelin Basic Protein antibody (clone MBP/4273). Isoforms may be visualized from 20~37 kDa.



SDS-PAGE analysis of purified, BSA-free Myelin Basic Protein antibody (clone MBP/4273) as confirmation of integrity and purity.

Description

Myelin basic protein (MBP) is the second most abundant protein in central nervous system (CNS) myelin: it comprises 30% of the total protein and about 10% of the dry weight of myelin. It is the only structural protein found so far to be essential for formation of CNS myelin, and has been called the executive molecule of myelin. MBP can interact with a number of polyanionic proteins including actin, tubulin, calmodulin, and clathrin, and negatively charged lipids, and acquires structure on binding to them. It may act as a membrane actin-binding protein, which might allow it to participate in transmission of extracellular signals to the cytoskeleton in oligodendrocytes and tight junctions in myelin. MBP may be applicable as a marker for oligodendrogliomas. MBP/4273 recognizes an epitope in the 82-87 region of MBP, useful in clinical diagnosis to detect MBP levels or myelination in human MBP. MBP/4273 is also used in a 2-site ELISA with clone MBP/4275. Both are used interchangeably as capture and detection antibody.

Application Notes

Optimal dilution of the Myelin Basic Protein antibody should be determined by the researcher.

Immunogen

Recombinant human Myelin Basic Protein was used as the immunogen for this Myelin Basic Protein antibody.

Storage

Store the Myelin Basic Protein antibody at 2-8°C (with azide) or aliquot and store at -20°C or colder (without azide).

