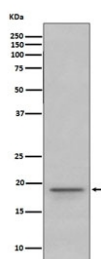


Myelin Basic Protein Antibody / MBP [clone IIE-13] (RQ5003)

Catalog No.	Formulation	Size
RQ5003	Antibody in PBS with 0.02% sodium azide, 50% glycerol and 0.4-0.5mg/ml BSA	100 ul

[Bulk quote request](#)

Availability	1-2 weeks
Species Reactivity	Human
Format	Purified
Host	Rabbit
Clonality	Rabbit Monoclonal
Isotype	Rabbit IgG
Clone Name	IIE-13
Purity	Affinity purified
UniProt	P02686
Applications	Western Blot : 1:500-1:2000
Limitations	This Myelin Basic Protein antibody is available for research use only.



Western blot testing of human fetal brain lysate with Myelin Basic Protein antibody.
Expected molecular weight: 20-37 kDa.

Description

The classic group of MBP isoforms (isoform 4-isoform 14) are with PLP the most abundant protein components of the myelin membrane in the CNS. They have a role in both its formation and stabilization. [UniProt]

Application Notes

Optimal dilution of the Myelin Basic Protein antibody should be determined by the researcher.

Immunogen

A synthetic peptide specific to human Myelin Basic Protein / MBP was used as the immunogen for the Myelin Basic Protein antibody.

Storage

Store the Myelin Basic Protein antibody at -20oC.