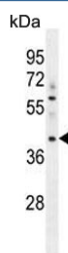


## MYBPHL Antibody (F54617)

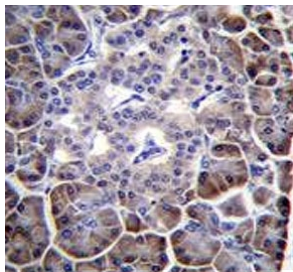
Catalog No.	Formulation	Size
F54617-0.4ML	In 1X PBS, pH 7.4, with 0.09% sodium azide	0.4 ml
F54617-0.08ML	In 1X PBS, pH 7.4, with 0.09% sodium azide	0.08 ml

[Bulk quote request](#)

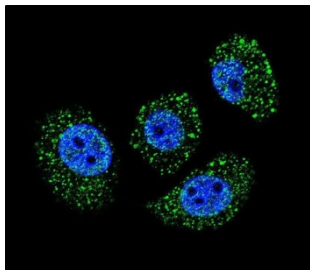
<b>Availability</b>	1-3 business days
<b>Species Reactivity</b>	Human
<b>Format</b>	Purified
<b>Host</b>	Rabbit
<b>Clonality</b>	Polyclonal (rabbit origin)
<b>Isotype</b>	Rabbit Ig
<b>Purity</b>	Antigen affinity purified
<b>UniProt</b>	A2RUH7
<b>Localization</b>	Cytoplasmic
<b>Applications</b>	Flow Cytometry : 1:25 (1x10 <sup>6</sup> cells) Immunofluorescence : 1:25 Immunohistochemistry (FFPE) : 1:25 Western Blot : 1:500-1:2000
<b>Limitations</b>	This MYBPHL antibody is available for research use only.



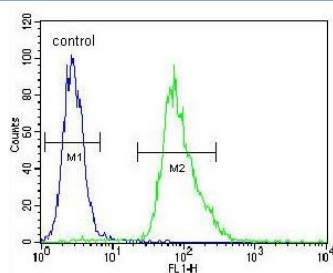
Western blot testing of human A549 cell lysate with MYBPHL antibody. Predicted molecular weight ~38 kDa.



IHC testing of FFPE human pancreas tissue with MYBPHL antibody. HIER: steam section in pH6 citrate buffer for 20 min and allow to cool prior to staining.



Immunofluorescent staining of human A549 cells with MYBPHL antibody (green) and DAPI nuclear stain (blue).



Flow cytometry testing of human A549 cells with MYBPHL antibody; Blue=isotype control, Green= MYBPHL antibody.

## Description

Myosin-binding protein which plays a role in cardiac function. [UniProt]

## Application Notes

The stated application concentrations are suggested starting points. Titration of the MYBPHL antibody may be required due to differences in protocols and secondary/substrate sensitivity.

## Immunogen

A portion of amino acids 80-108 from the human protein was used as the immunogen for the MYBPHL antibody.

## Storage

Aliquot the MYBPHL antibody and store frozen at -20oC or colder. Avoid repeated freeze-thaw cycles.