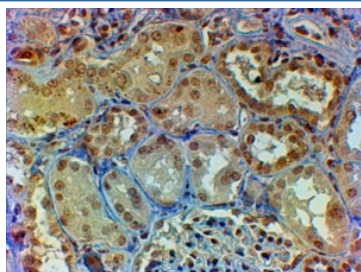


Myb Antibody (R35429)

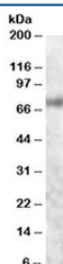
Catalog No.	Formulation	Size
R35429-100UG	0.5 mg/ml in 1X TBS, pH7.3, with 0.5% BSA (US sourced) and 0.02% sodium azide	100 ug

[Bulk quote request](#)

Availability	1-3 business days
Species Reactivity	Human
Predicted Reactivity	Dog, Mouse, Rat
Format	Antigen affinity purified
Clonality	Polyclonal (goat origin)
Isotype	Goat Ig
Purity	Antigen affinity
Gene ID	4602
Applications	Western Blot : 0.5-2ug/ml Immunohistochemistry (FFPE) : 2-4ug/ml ELISA (peptide) LOD : 1:1000
Limitations	This Myb antibody is available for research use only.



IHC staining of FFPE human kidney with Myb antibody at 2ug/ml. HIER: steamed with pH6 citrate buffer, HRP-staining.



Western blot testing of human colon lysate with Myb antibody at 1ug/ml. Predicted molecular weight 60~85 kDa (isoforms 1-7), observed here at ~70kDa.

Description

Additional name(s) for this target protein: C-myeloblastosis

Application Notes

Optimal dilution of the Myb antibody should be determined by the researcher.

Immunogen

Amino acids QRHYNDEDPEKEKR were used as the immunogen for this Myb antibody.

Storage

Aliquot and store the Myb antibody at -20oC.