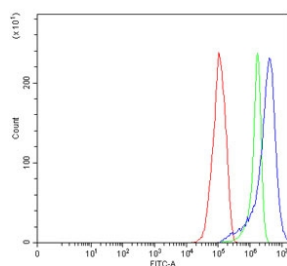


## MX1 Antibody / Myxovirus resistance protein 1 / MxA (RQ7191)

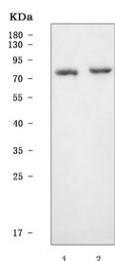
Catalog No.	Formulation	Size
RQ7191	0.5mg/ml if reconstituted with 0.2ml sterile DI water	100 ug

[Bulk quote request](#)

<b>Availability</b>	1-3 business days
<b>Species Reactivity</b>	Human, Mouse
<b>Format</b>	Antigen affinity purified
<b>Host</b>	Rabbit
<b>Clonality</b>	Polyclonal (rabbit origin)
<b>Isotype</b>	Rabbit IgG
<b>Purity</b>	Antigen affinity purified
<b>Buffer</b>	Lyophilized from 1X PBS with 2% Trehalose
<b>UniProt</b>	P20591
<b>Applications</b>	Western Blot : 0.5-1ug/ml Flow Cytometry : 1-3ug/million cells Direct ELISA : 0.1-0.5ug/ml
<b>Limitations</b>	This MX1 antibody is available for research use only.



Flow cytometry testing of human RT4 cells with MX1 antibody at 1ug/million cells (blocked with goat sera); Red=cells alone, Green=isotype control, Blue= MX1 antibody.



Western blot testing of 1) human HeLa and 2) mouse lung tissue lysate with MX1 antibody. Predicted molecular weight ~76 kDa.

## Description

Interferon-induced GTP-binding protein Mx1, also called Myxovirus resistance protein 1, Myxoma resistance protein 1 and MxA, is a protein that in humans is encoded by the MX1 gene. This gene encodes a guanosine triphosphate (GTP)-metabolizing protein that participates in the cellular antiviral response. The encoded protein is induced by type I and type II interferons and antagonizes the replication process of several different RNA and DNA viruses. There is a related gene located adjacent to this gene on chromosome 21, and there are multiple pseudogenes located in a cluster on chromosome 4. Alternative splicing results in multiple transcript variants.

Learn more about MX1 function in interferon signaling, antiviral defense mechanisms, innate immunity, and host-pathogen interactions on our [MX1 Antibody](#) page.

## Application Notes

Optimal dilution of the MX1 antibody should be determined by the researcher.

## Immunogen

Recombinant human protein (amino acids K435-Q621) was used as the immunogen for the MX1 antibody.

## Storage

After reconstitution, the MX1 antibody can be stored for up to one month at 4°C. For long-term, aliquot and store at -20°C. Avoid repeated freezing and thawing.