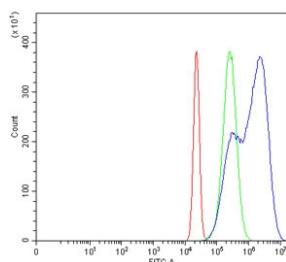


## Mutated in Colorectal Cancers Antibody / MCC (RQ6655)

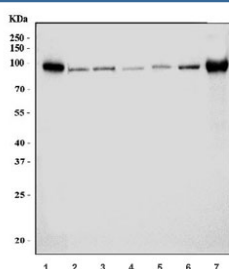
Catalog No.	Formulation	Size
RQ6655	0.5mg/ml if reconstituted with 0.2ml sterile DI water	100 ug

**Bulk quote request**

<b>Availability</b>	1-3 business days
<b>Species Reactivity</b>	Human, Mouse, Rat
<b>Format</b>	Antigen affinity purified
<b>Clonality</b>	Polyclonal (rabbit origin)
<b>Isotype</b>	Rabbit IgG
<b>Purity</b>	Antigen affinity purified
<b>Buffer</b>	Lyophilized from 1X PBS with 2% Trehalose
<b>UniProt</b>	P23508
<b>Applications</b>	Western Blot : 1-2ug/ml Flow Cytometry : 1-3ug/million cells Direct ELISA : 0.1-0.5ug/ml
<b>Limitations</b>	This Mutated in Colorectal Cancers antibody is available for research use only.



Flow cytometry testing of human HeLa cells with Mutated in Colorectal Cancers antibody at 1ug/million cells (blocked with goat sera); Red=cells alone, Green=isotype control, Blue= Mutated in Colorectal Cancers antibody.



Western blot testing of 1) human U-87 MG, 2) human HEK293, 3) human HeLa, 4) rat brain, 5) rat lung, 6) mouse brain and 7) mouse lung tissue lysate with Mutated in Colorectal Cancers antibody. Predicted molecular weight ~91 kDa.

## Description

MUTATED IN COLORECTAL CANCERS (MCC) is a tumor suppressor gene. It is mapped to 5q22.2. This gene suppresses cell proliferation and the Wnt/b-catenin pathway in colorectal cancer cells. MCC also Inhibits DNA binding of b-catenin/TCF/LEF transcription factors, and it is Involved in cell migration independently of RAC1, CDC42 and p21-activated kinase (PAK) activation. What's more, MCC can interact with SCRIB (via phosphorylated PDZ-binding motif), EZR, SNX27, SLC9A3R1 and SLC9A3R2.

## Application Notes

Optimal dilution of the Mutated in Colorectal Cancers antibody should be determined by the researcher.

## Immunogen

Recombinant human protein (amino acids M1-E234) was used as the immunogen for the Mutated in Colorectal Cancers antibody.

## Storage

After reconstitution, the Mutated in Colorectal Cancers antibody can be stored for up to one month at 4oC. For long-term, aliquot and store at -20oC. Avoid repeated freezing and thawing.