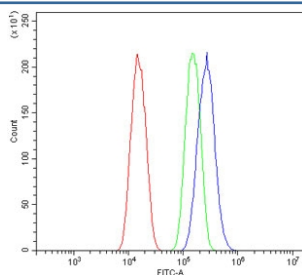


Musashi 1 Antibody / MSI1 (RQ5992)

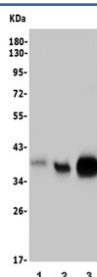
Catalog No.	Formulation	Size
RQ5992	0.5mg/ml if reconstituted with 0.2ml sterile DI water	100 ug

Bulk quote request

Availability	1-3 business days
Species Reactivity	Human
Format	Antigen affinity purified
Host	Rabbit
Clonality	Polyclonal (rabbit origin)
Isotype	Rabbit IgG
Purity	Affinity purified
Buffer	Lyophilized from 1X PBS with 2% Trehalose and 0.025% sodium azide
UniProt	O43347
Applications	Western Blot : 0.5-1ug/ml Flow Cytometry : 1-3ug/million cells Direct ELISA : 0.1-0.5ug/ml
Limitations	This Musashi 1 antibody is available for research use only.



Flow cytometry testing of human A549 cells with Musashi 1 antibody at 1ug/million cells (blocked with goat sera); Red=cells alone, Green=isotype control, Blue= Musashi 1 antibody.



Western blot testing of human 1) U-2 OS, 2) T-47D and 3) COLO-320 lysate with Musashi 1 antibody. Predicted molecular weight ~39 kDa.

Description

RNA-binding protein Musashi homolog 1 is a protein that in humans is encoded by the MSI1 gene. This gene encodes a protein containing two conserved tandem RNA recognition motifs. Similar proteins in other species function as RNA-binding proteins and play central roles in posttranscriptional gene regulation. Expression of this gene has been correlated with the grade of the malignancy and proliferative activity in gliomas and melanomas. A pseudogene for this gene is located on chromosome 11q13.

Application Notes

Optimal dilution of the Musashi 1 antibody should be determined by the researcher.

Immunogen

Amino acids KMFIGGLSWQTTQEGLREYFGQFGEVKECLVMRD from the human protein were used as the immunogen for the Musashi 1 antibody.

Storage

After reconstitution, the Musashi 1 antibody can be stored for up to one month at 4°C. For long-term, aliquot and store at -20°C. Avoid repeated freezing and thawing.