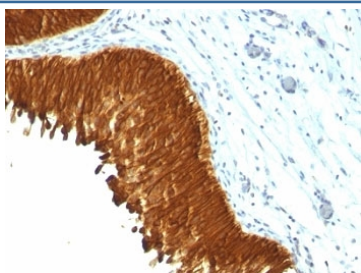


## Multi Cytokeratin Antibody [clone KRT/457] (V3065)

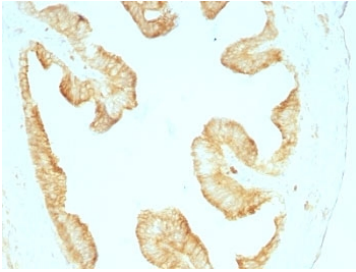
Catalog No.	Formulation	Size
V3065-100UG	0.2 mg/ml in 1X PBS with 0.1 mg/ml BSA (US sourced) and 0.05% sodium azide	100 ug
V3065-20UG	0.2 mg/ml in 1X PBS with 0.1 mg/ml BSA (US sourced) and 0.05% sodium azide	20 ug
V3065SAF-100UG	1 mg/ml in 1X PBS; BSA free, sodium azide free	100 ug
V3065IHC-7ML	Prediluted in 1X PBS with 0.1 mg/ml BSA (US sourced) and 0.05% sodium azide; *For IHC use only*	7 ml

**Bulk quote request**

<b>Availability</b>	1-3 business days
<b>Species Reactivity</b>	Human, Rat
<b>Format</b>	Purified
<b>Clonality</b>	Monoclonal (mouse origin)
<b>Isotype</b>	Mouse IgG1, kappa
<b>Clone Name</b>	KRT/457
<b>Purity</b>	Protein G affinity chromatography
<b>UniProt</b>	multi
<b>Localization</b>	Cytoplasmic
<b>Applications</b>	Immunohistochemistry (FFPE) : 1-2ug/ml for 30 min at RT (1) Prediluted IHC Only Format : incubate for 30 min at RT (2)
<b>Limitations</b>	This Multi Cytokeratin antibody is available for research use only.



IHC: Formalin-fixed, paraffin-embedded human bladder carcinoma stained with Multi Cytokeratin antibody (KRT/457).



IHC: Formalin-fixed, paraffin-embedded rat oviduct stained with Multi Cytokeratin antibody (KRT/457).

## Description

Twenty human keratins are resolved with two-dimensional gel electrophoresis into acidic (pI 6.0) subfamilies. This mAb recognizes acidic (Type I or LMW) and basic (Type II or HMW) cytokeratins, including 59kDa (CK4); 58kDa (CK5); 56kDa (CK6); 52kDa (CK8); 56.5kDa (CK10); 53kDa (CK13) and 45kDa (CK18). This is a broad-spectrum mAb which has been reported to differentiate epithelial tumors from non-epithelial tumors. Many studies have shown the usefulness of keratins as markers in cancer research and tumor diagnosis.

## Application Notes

Optimal dilution of the Multi Cytokeratin antibody should be determined by the researcher.

1. Staining of formalin-fixed tissues requires boiling tissue sections in pH 9 10mM Tris with 1mM EDTA for 10-20 min followed by cooling at RT for 20 min.
2. The prediluted format is supplied in a dropper bottle and is optimized for use in IHC. After epitope retrieval step (if required), drip mAb solution onto the tissue section and incubate at RT for 30 min.

## Immunogen

A Keratin-enriched preparation from cultured human epithelial cells was used as the immunogen for the Multi Cytokeratin antibody.

## Storage

Store the Multi Cytokeratin antibody at 2-8°C (with azide) or aliquot and store at -20°C or colder (without azide).