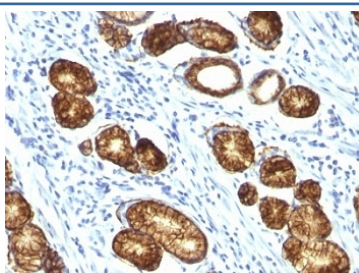


## Mucin-6 Antibody [clone MUC6/916] (V2743)

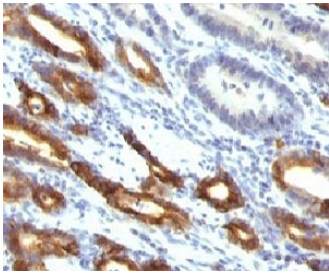
Catalog No.	Formulation	Size
V2743-100UG	0.2 mg/ml in 1X PBS with 0.1 mg/ml BSA (US sourced) and 0.05% sodium azide	100 ug
V2743-20UG	0.2 mg/ml in 1X PBS with 0.1 mg/ml BSA (US sourced) and 0.05% sodium azide	20 ug
V2743SAF-100UG	1 mg/ml in 1X PBS; BSA free, sodium azide free	100 ug
V2743IHC-7ML	Prediluted in 1X PBS with 0.1 mg/ml BSA (US sourced) and 0.05% sodium azide; *For IHC use only*	7 ml

[Bulk quote request](#)

<b>Availability</b>	1-3 business days
<b>Species Reactivity</b>	Human
<b>Format</b>	Purified
<b>Clonality</b>	Monoclonal (mouse origin)
<b>Isotype</b>	Mouse IgG1, kappa
<b>Clone Name</b>	MUC6/916
<b>Purity</b>	Protein G affinity chromatography
<b>UniProt</b>	Q6W4X9
<b>Localization</b>	Cytoplasmic & secreted
<b>Applications</b>	Immunohistochemistry (FFPE) : 2-4ug/ml for 30 min at RT
<b>Limitations</b>	This Mucin-6 antibody is available for research use only.



IHC: Formalin-fixed, paraffin-embedded human gastric carcinoma stained with Mucin-6 antibody (MUC6/916).



IHC: Formalin-fixed, paraffin-embedded human gastric carcinoma stained with Mucin-6 antibody (MUC6/916).

## Description

MUC6 or gastric mucin is a secreted glycoprotein that plays an essential role in epithelial cyto-protection from acid, proteases, pathogenic microorganisms, and mechanical trauma in the gastrointestinal tract. Mucin 6 expression is highest in the stomach and gall bladder, with lower expression in the terminal ileum and right colon. In gastric cancer, Mucin 6 has an altered expression. In normal stomach, Mucin 6 is associated with Lewis type 2; Mucin 6 is also expressed in gastric metaplasia, duodenum and pancreas. Mucin 6 is a secretory mucin, located in the deeper mucosal folds of human gall bladder, and its expression is altered with increasing degrees of inflammation.

## Application Notes

Optimal dilution of the Mucin-6 antibody should be determined by the researcher.

1. Staining of formalin-fixed tissues requires boiling tissue sections in pH 9 10mM Tris with 1mM EDTA for 10-20 min followed by cooling at RT for 20 min
2. The prediluted format is supplied in a dropper bottle and is optimized for use in IHC. After epitope retrieval step (if required), drip mAb solution onto the tissue section and incubate at RT for 30 min.

## Immunogen

Recombinant human protein was used as the immunogen for the Mucin-6 antibody.

## Storage

Store the Mucin-6 antibody at 2-8oC (with azide) or aliquot and store at -20oC or colder (without azide).