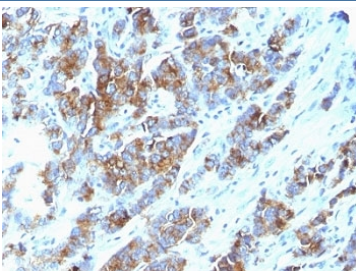


## Mucin-1 Antibody [clone SPM533] (V9048)

Catalog No.	Formulation	Size
V9048-100UG	0.2 mg/ml in 1X PBS with 0.1 mg/ml BSA (US sourced) and 0.05% sodium azide	100 ug
V9048-20UG	0.2 mg/ml in 1X PBS with 0.1 mg/ml BSA (US sourced) and 0.05% sodium azide	20 ug
V9048SAF-100UG	1 mg/ml in 1X PBS; BSA free, sodium azide free	100 ug
V9048IHC-7ML	Prediluted in 1X PBS with 0.1 mg/ml BSA (US sourced) and 0.05% sodium azide; *For IHC use only*	7 ml

### Bulk quote request

<b>Availability</b>	1-3 business days
<b>Species Reactivity</b>	Human
<b>Format</b>	Purified
<b>Host</b>	Mouse
<b>Clonality</b>	Monoclonal (mouse origin)
<b>Isotype</b>	Mouse IgG2a, lambda
<b>Clone Name</b>	SPM533
<b>Purity</b>	Protein G affinity chromatography
<b>UniProt</b>	P15941
<b>Localization</b>	Cytoplasmic & cell surface
<b>Applications</b>	Immunohistochemistry (FFPE) : 1-2ug/ml for 30 min at RT
<b>Limitations</b>	This Mucin-1 antibody is available for research use only.



IHC: Formalin-fixed, paraffin-embedded human breast carcinoma stained with Mucin-1 antibody (clone SPM533).

## Description

Mucin-1 is a 265-400kDa glycoprotein. This protein is proteolytically cleaved into alpha and beta subunits that form a heterodimeric complex. The N-terminal alpha subunit and the C-terminal beta subunit. . The alpha subunit has cell adhesive properties. It can act both as an adhesion and an anti-adhesion protein. MUC1 may provide a protective layer on epithelial cells against bacterial and enzyme attack. The beta subunit contains a C-terminal domain, which is involved in cell signaling, through phosphorylations and protein-protein interactions.

## Application Notes

The optimal dilution of the Mucin-1 antibody for each application should be determined by the researcher.

1. Staining of formalin-fixed tissues requires boiling tissue sections in pH 9 10mM Tris with 1mM EDTA for 10-20 min followed by cooling at RT for 20 minutes.
2. The prediluted format is supplied in a dropper bottle and is optimized for use in IHC. After epitope retrieval step (if required), drip mAb solution onto the tissue section and incubate at RT for 30 min.

## Immunogen

Delipidated extract of human milk fat globule membranes was used as the immunogen for this Mucin-1 antibody.

## Storage

Store the Mucin-1 antibody at 2-8oC (with azide) or aliquot and store at -20oC or colder (without azide).