

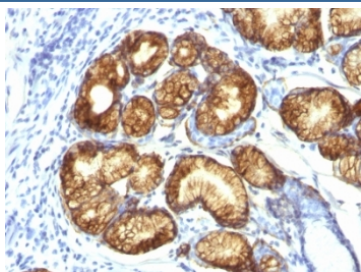
MUC6 Antibody (Gastric Mucin) [clone CLH5] (V2741)

Catalog No.	Formulation	Size
V2741-100UG	0.2 mg/ml in 1X PBS with 0.1 mg/ml BSA (US sourced) and 0.05% sodium azide	100 ug
V2741-20UG	0.2 mg/ml in 1X PBS with 0.1 mg/ml BSA (US sourced) and 0.05% sodium azide	20 ug
V2741SAF-100UG	1 mg/ml in 1X PBS; BSA free, sodium azide free	100 ug
V2741IHC-7ML	Prediluted in 1X PBS with 0.1 mg/ml BSA (US sourced) and 0.05% sodium azide; *For IHC use only*	7 ml

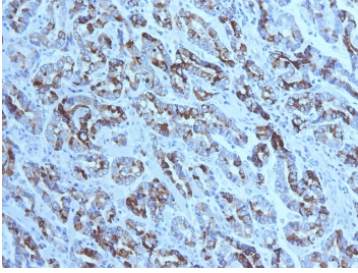
 Citations (10)

[Bulk quote request](#)

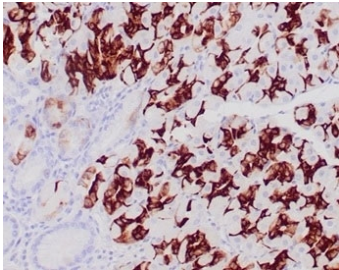
Availability	1-3 business days
Species Reactivity	Human
Format	Purified
Host	Mouse
Clonality	Monoclonal (mouse origin)
Isotype	Mouse IgG1, kappa
Clone Name	CLH5
Purity	Protein G affinity chromatography
UniProt	Q6W4X9
Localization	Cytoplasmic & secreted
Applications	Flow Cytometry : 0.5-1ug/10 ⁶ cells Immunofluorescence : 1-2ug/ml Immunohistochemistry (FFPE) : 2-4ug/ml for 30 min at RT
Limitations	This MUC6 antibody is available for research use only.



IHC: Formalin-fixed, paraffin-embedded human gastric carcinoma stained with MUC6 antibody (clone CLH5). HIER: steam section in pH6 citrate buffer for 20 min and allow to cool prior to testing.



IHC testing of FFPE human gastric carcinoma with MUC6 antibody (clone CLH5). HIER: steam section in pH6 citrate buffer for 20 min and allow to cool prior to testing. Image courtesy of Dr. Leonor David, IPATIMUP and Medical Faculty, University of Porto, Portugal.



IHC staining of glandular cells of FFPE normal human stomach tissue with MUC6 antibody (clone CLH5). HIER: boil tissue sections in pH 9 10mM Tris with 1mM EDTA for 20 min and allow to cool before testing.

Description

The MUC6 gastric mucin is a secreted glycoprotein that plays an essential role in epithelial cyto-protection from acid, proteases, pathogenic microorganisms, and mechanical trauma in the gastrointestinal tract. Mucin 6 expression is highest in the stomach and gall bladder, with lower expression in the terminal ileum and right colon. In gastric cancer, Mucin 6 has an altered expression. In normal stomach, Mucin 6 is associated with Lewis type 2; Mucin 6 is also expressed in gastric metaplasia, duodenum and pancreas. Mucin 6 is a secretory mucin, located in the deeper mucosal folds of human gall bladder, and its expression is altered with increasing degrees of inflammation.

Application Notes

Optimal dilution of the MUC6 antibody should be determined by the researcher.

1. The prediluted format is supplied in a dropper bottle and is optimized for use in IHC. After epitope retrieval step (if required), drip mAb solution onto the tissue section and incubate at RT for 30 min.

Immunogen

A synthetic peptide of the gastric Mucin 6 tandem repeat sequence was used as the immunogen for the MUC6 antibody.

Storage

Store the MUC6 antibody at 2-8°C (with azide) or aliquot and store at -20°C or colder (without azide).

