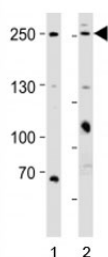


## MUC4 Antibody (F52751)

Catalog No.	Formulation	Size
F52751-0.4ML	In 1X PBS, pH 7.4, with 0.09% sodium azide	0.4 ml
F52751-0.08ML	In 1X PBS, pH 7.4, with 0.09% sodium azide	0.08 ml

[Bulk quote request](#)

<b>Availability</b>	1-3 business days
<b>Species Reactivity</b>	Human
<b>Format</b>	Antigen affinity purified
<b>Host</b>	Rabbit
<b>Clonality</b>	Polyclonal (rabbit origin)
<b>Isotype</b>	Rabbit Ig
<b>Purity</b>	Antigen affinity
<b>UniProt</b>	Q99102
<b>Applications</b>	Western Blot : 1:1000
<b>Limitations</b>	This MUC4 antibody is available for research use only.



Western blot analysis of lysate from 1) HeLa and 2) MCF-7 cell line using MUC4 antibody; Ab was diluted at 1:1000 for each lane.

## Description

May play a role in tumor progression. Ability to promote tumor growth may be mainly due to repression of apoptosis as opposed to proliferation. Has anti-adhesive properties. Seems to alter cellular behavior through both anti-adhesive effects on cell-cell and cell-extracellular matrix interactions and in its ability to act as an intramembrane ligand for ERBB2. Plays an important role in cell proliferation and differentiation of epithelial cells by inducing specific phosphorylation of ERBB2. The MUC4-ERBB2 complex causes site-specific phosphorylation of the ERBB2 'Tyr-1248'. In polarized epithelial cells segregates ERBB2 and other ERBB receptors and prevents ERBB2 from acting as a coreceptor. The interaction with ERBB2 leads to enhanced expression of CDKN1B. The formation of a MUC4-ERBB2-ERBB3-NRG1 complex leads to

down-regulation of CDKN1B, resulting in repression of apoptosis and stimulation of proliferation.

## Application Notes

Titration of the MUC4 antibody may be required due to differences in protocols and secondary/substrate sensitivity.

## Immunogen

This MUC4 antibody was produced from a rabbit immunized with a KLH conjugated synthetic peptide between 529-560 amino acids from the N-terminal region of human Mucin-4 alpha chain.

## Storage

Aliquot the MUC4 antibody and store frozen at -20oC or colder. Avoid repeated freeze-thaw cycles.