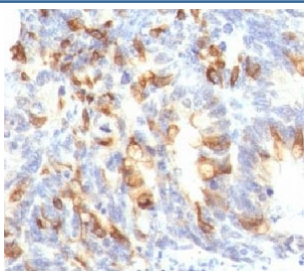


MUC2 Antibody [clone MLP/842] (V2729)

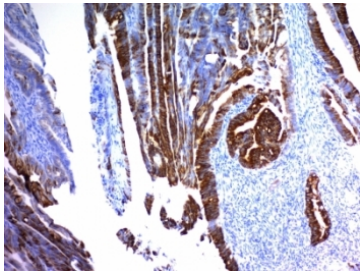
Catalog No.	Formulation	Size
V2729-100UG	0.2 mg/ml in 1X PBS with 0.1 mg/ml BSA (US sourced) and 0.05% sodium azide	100 ug
V2729-20UG	0.2 mg/ml in 1X PBS with 0.1 mg/ml BSA (US sourced) and 0.05% sodium azide	20 ug
V2729SAF-100UG	1 mg/ml in 1X PBS; BSA free, sodium azide free	100 ug
V2729IHC-7ML	Prediluted in 1X PBS with 0.1 mg/ml BSA (US sourced) and 0.05% sodium azide; *For IHC use only*	7 ml

[Bulk quote request](#)

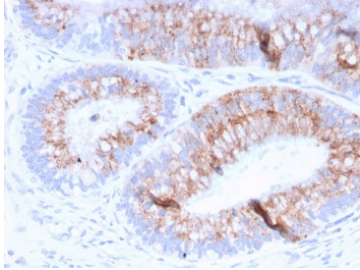
Availability	1-3 business days
Species Reactivity	Human
Format	Purified
Host	Mouse
Clonality	Monoclonal (mouse origin)
Isotype	Mouse IgG1, kappa
Clone Name	MLP/842
Purity	Protein G affinity chromatography
UniProt	Q02817
Localization	Cytoplasmic and cell surface
Applications	Immunohistochemistry (FFPE) : 1-2ug/ml for 30 min at RT
Limitations	This MUC2 antibody is available for research use only.



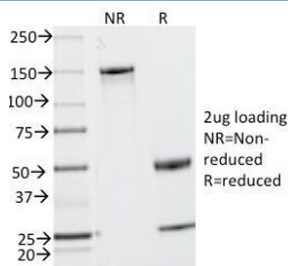
IHC: Formalin-fixed, paraffin-embedded human colon carcinoma stained with MUC2 antibody (clone MLP/842).



IHC: Formalin-fixed, paraffin-embedded human colon carcinoma stained with MUC2 antibody (clone MLP/842).



IHC: Formalin-fixed, paraffin-embedded human colon carcinoma stained with MUC2 antibody (clone MLP/842).



SDS-PAGE analysis of purified, BSA-free MUC2 antibody (clone MLP/842) as confirmation of integrity and purity.

Description

Recognizes a single glycoprotein of 520kDa, identified as mucin 2 (MUC2). This mAb shows no cross-reaction with human milk fat globule membranes, MUC1, or MUC3. Mucins are high molecular weight glycoproteins, which constitute the major component of the mucus layer that protects the gastric epithelium. MUC2 is specifically expressed in goblet cells of the small intestine & colon; in about 65% of colonic carcinomas and about 40% of gastric carcinomas. MUC2 is rarely expressed outside of the GI tract with the exceptions of mucinous carcinoma of breast and clear cell-type carcinomas of the ovary.

Application Notes

Optimal dilution of the MUC2 antibody should be determined by the researcher.

1. Staining of formalin-fixed tissues requires boiling tissue sections in 10mM Tris-HCl buffer, pH 10 for 10-20 min followed by cooling at RT for 20 minutes
2. The prediluted format is supplied in a dropper bottle and is optimized for use in IHC. After epitope retrieval step (if required), drip mAb solution onto the tissue section and incubate at RT for 30 min.

Immunogen

Recombinant human protein was used as the immunogen for the MUC2 antibody.

Storage

Store the MUC2 antibody at 2-8°C (with azide) or aliquot and store at -20°C or colder (without azide).

