

## MUC16 Antibody [clone 5E11.] (V3494)

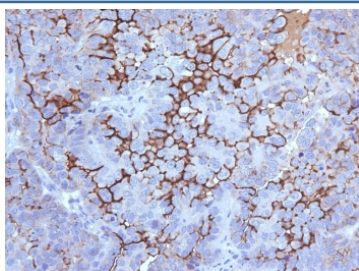
Catalog No.	Formulation	Size
V3494-100UG	0.2 mg/ml in 1X PBS with 0.1 mg/ml BSA (US sourced) and 0.05% sodium azide	100 ug
V3494-20UG	0.2 mg/ml in 1X PBS with 0.1 mg/ml BSA (US sourced) and 0.05% sodium azide	20 ug
V3494SAF-100UG	1 mg/ml in 1X PBS; BSA free, sodium azide free	100 ug
V3494IHC-7ML	Prediluted in 1X PBS with 0.1 mg/ml BSA (US sourced) and 0.05% sodium azide; *For IHC use only*	7 ml



Citations (3)

[Bulk quote request](#)

<b>Availability</b>	1-3 business days
<b>Species Reactivity</b>	Human
<b>Format</b>	Purified
<b>Clonality</b>	Monoclonal (mouse origin)
<b>Isotype</b>	Mouse IgG1, kappa
<b>Clone Name</b>	5E11.
<b>Purity</b>	Protein G affinity chromatography
<b>UniProt</b>	Q8WXI7
<b>Localization</b>	Cell surface, cytoplasmic, secreted
<b>Applications</b>	Immunohistochemistry (FFPE) : 1-2ug/ml for 30 min at RT
<b>Limitations</b>	This MUC16 antibody is available for research use only.



IHC testing of FFPE human ovarian carcinoma with MUC16 antibody (clone 5E11). Required HIER: steam section in pH 9 10mM Tris with 1mM EDTA for 20 min and allow to cool prior to testing. Data courtesy of Dr. Leonor David, IPATIMUP and Medical Faculty University of Porto, Portugal.

## Description

The mucins are a family of highly glycosylated, secreted proteins with a basic structure consisting of a variable number of tandem repeats (VNTRs). Membrane-associated and secretory mucins are high molecular weight glycoproteins of the glycocalyx (polysaccharide biofilm) that protects mucosal epithelium from particulate matter and microorganisms. Epithelial mucins are large, secreted and cell surface glycoproteins crucial for adhesion modulation, signaling and epithelial cell protection. The number of repeats is highly polymorphic and varies among different alleles. The Mucin family consists of Mucins 1-4, Mucin 5 (AC and B), 6-8, 11-13 and 15-17. The Mucin 16 protein (also commonly referred to as CA125), encoded for by the gene MUC16, is a very high molecular weight tumor antigen consisting of three domains: a carboxy terminal domain, an extracellular domain and an amino terminal domain. Mucin 16, an ovarian cancer-associated antigen, is used as a marker to monitor the progress of epithelial ovarian cancer. It is a hydrophilic membrane-associated protein that may be involved in vitamin A functions.

## Application Notes

Optimal dilution of the MUC16 antibody should be determined by the researcher.

1. The prediluted format is supplied in a dropper bottle and is optimized for use in IHC. After epitope retrieval step (if required), drip mAb solution onto the tissue section and incubate at RT for 30 min.

## Immunogen

An enzymatically glycosylated fragment of human MUC16 recombinant protein was used as the immunogen for the MUC16 antibody.

## Storage

Store the MUC16 antibody at 2-8°C (with azide) or aliquot and store at -20°C or colder (without azide).