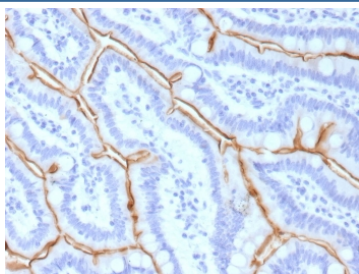


MUC13 Antibody / Mucin 13 [clone MUC13/13111] (V5777)

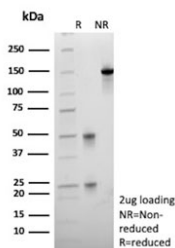
| Catalog No. | Formulation | Size |
|----------------|---|--------|
| V5777-100UG | 0.2 mg/ml in 1X PBS with 0.1 mg/ml BSA (US sourced), 0.05% sodium azide | 100 ug |
| V5777-20UG | 0.2 mg/ml in 1X PBS with 0.1 mg/ml BSA (US sourced), 0.05% sodium azide | 20 ug |
| V5777SAF-100UG | 1 mg/ml in 1X PBS; BSA free, sodium azide free | 100 ug |

[Bulk quote request](#)

| | |
|---------------------------|---|
| Availability | 1-3 business days |
| Species Reactivity | Human |
| Format | Purified |
| Host | Mouse |
| Clonality | Monoclonal (mouse origin) |
| Isotype | Mouse IgG1, kappa |
| Clone Name | MUC13/13111 |
| Purity | Protein G affinity |
| UniProt | Q9H3R2 |
| Localization | Cell membrane |
| Applications | Immunohistochemistry (FFPE) : 1-2ug/ml |
| Limitations | This MUC13 antibody is available for research use only. |



IHC staining of FFPE human small intestine tissue with MUC13 antibody (clone MUC13/13111). HIER: boil tissue sections in pH 9 10mM Tris with 1mM EDTA for 20 min and allow to cool before testing.



SDS-PAGE analysis of purified, BSA-free MUC13 antibody (clone MUC13/13111) as confirmation of integrity and purity.

Description

Mucins are epithelial glycoproteins with a high content of clustered oligosaccharides that are O-glycoside linked to tandem repeat peptides rich in threonine, serine and proline. Mucin 13 (MUC13), also designated downregulated in colon cancer 1 (DRCC1), is an epithelial and hemopoietic type I membrane protein that undergoes secretion and influences gastrointestinal mucosa levels. It is most abundant in epithelial tissues of the gastrointestinal and respiratory tracts, such as large intestine and trachea, followed by kidney, small intestine, appendix and stomach. Mucin 13 is a good differentiation marker for gastrointestinal mucosa and may also indicate certain gastric tumors. It localizes to the apical membrane of both columnar and goblet cells in the gastrointestinal tract, and within goblet cell thecae. Mucin 13 is a cleaved protein, and the b subunit, containing the cytoplasmic tail, can homodimerize.

Application Notes

Optimal dilution of the MUC13 antibody should be determined by the researcher.

Immunogen

A portion of amino acids 100-300 from human Mucin 13 protein was used as the immunogen for the MUC13 antibody.

Storage

Aliquot the MUC13 antibody and store frozen at -20oC or colder. Avoid repeated freeze-thaw cycles.