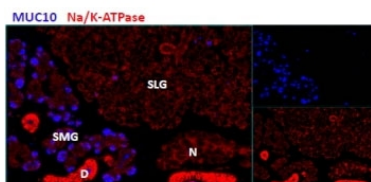


MUC10 Antibody (R35266)

Catalog No.	Formulation	Size
R35266-100UG	0.5 mg/ml in 1X TBS, pH7.3, with 0.5% BSA (US sourced) and 0.02% sodium azide	100 ug

[Bulk quote request](#)

Availability	1-3 business days
Species Reactivity	Mouse
Format	Antigen affinity purified
Host	Goat
Clonality	Polyclonal (goat origin)
Isotype	Goat Ig
Purity	Antigen affinity
Gene ID	17830
Applications	Immunohistochemistry (FFPE) : suitable ELISA (peptide) LOD : 1:32000
Limitations	This MUC10 antibody is available for research use only.



IHC testing of cells in the submandibular salivary gland (SMG), but not in the sublingual salivary gland (SLG) in mouse using MUC10 antibody at 2.9ug/ml

Description

Additional name(s) for this target protein: Prol1; Proline rich lacrimal 1; Proline rich 1; Mucin 10; MUC10

Application Notes

Optimal dilution of the MUC10 antibody should be determined by the researcher.

Immunogen

Amino acids QFPVRKYLEDPY were used as the immunogen for this MUC10 antibody.

Storage

Aliquot and store the MUC10 antibody at -20oC.