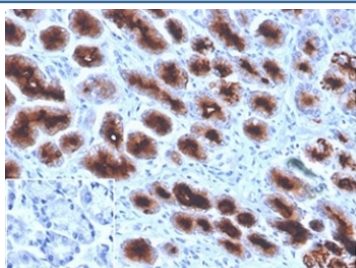


MUC1 Antibody / Mucin-1 [clone Mc5] (V8931)

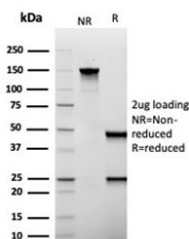
Catalog No.	Formulation	Size
V8931-100UG	0.2 mg/ml in 1X PBS with 0.1 mg/ml BSA (US sourced), 0.05% sodium azide	100 ug
V8931-20UG	0.2 mg/ml in 1X PBS with 0.1 mg/ml BSA (US sourced), 0.05% sodium azide	20 ug
V8931SAF-100UG	1 mg/ml in 1X PBS; BSA free, sodium azide free	100 ug

[Bulk quote request](#)

Availability	1-3 business days
Species Reactivity	Human
Format	Purified
Clonality	Monoclonal (mouse origin)
Isotype	Mouse IgG1, kappa
Clone Name	Mc5
Purity	Protein A/G affinity
UniProt	P15941
Localization	Cell surface, Cytoplasm
Applications	Flow Cytometry : 1-2ug/million cells Immunofluorescence : 1-2ug/ml Western Blot : 1-2ug/ml Immunohistochemistry (FFPE) : 1-2ug/ml
Limitations	This MUC1 antibody is available for research use only.



IHC staining of FFPE human stomach tissue with MUC1 antibody (clone Mc5). Negative control inset: PBS instead of primary antibody to control for secondary binding. HIER: boil tissue sections in pH 9 10mM Tris with 1mM EDTA for 20 min and allow to cool before testing.



SDS-PAGE analysis of purified, BSA-free MUC1 antibody (clone Mc5) as confirmation of integrity and purity.

Description

The mucin antigen recognized by Mc-5 is a glycosylated molecule with a molecular mass of 400 kD. The sequence to which this antibody binds is Thr-Arg-Pro-Ala-Pro. Although EMA is primarily located in mammary gland epithelium, other normal epithelia (e.g., lung) will also react against EMA antibody. Staining, however, is the strongest in mammary epithelia. The combination of positive staining for keratin with negative EMA can be used to phenotype the above-mentioned epithelial tumors. Recognizes the mucin antigen that is present in most epithelial tissues (breast, colonic, bronchial, gastric, etc.) This antibody does not recognize myelopoietic, lymphopoietic, fibroblasts or sarcomatous cells.

Application Notes

Optimal dilution of the MUC1 antibody should be determined by the researcher.

Immunogen

Delipidated human milk fat globules were used as the immunogen for the MUC1 antibody. The sequence to which this antibody binds is Thr-Arg-Pro-Ala-Pro.

Storage

Aliquot the MUC1 antibody and store frozen at -20oC or colder. Avoid repeated freeze-thaw cycles.