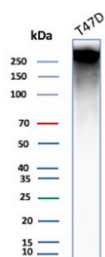


## MUC1 Antibody [clone E29] (V3128)

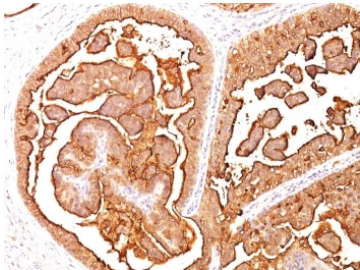
Catalog No.	Formulation	Size
V3128-100UG	0.2 mg/ml in 1X PBS with 0.1 mg/ml BSA (US sourced) and 0.05% sodium azide	100 ug
V3128-20UG	0.2 mg/ml in 1X PBS with 0.1 mg/ml BSA (US sourced) and 0.05% sodium azide	20 ug
V3128SAF-100UG	1 mg/ml in 1X PBS; BSA free, sodium azide free	100 ug
V3128IHC-7ML	Prediluted in 1X PBS with 0.1 mg/ml BSA (US sourced) and 0.05% sodium azide; *For IHC use only*	7 ml

[Bulk quote request](#)

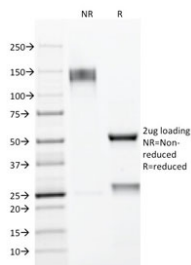
<b>Availability</b>	1-3 business days
<b>Species Reactivity</b>	Human
<b>Format</b>	Purified
<b>Clonality</b>	Monoclonal (mouse origin)
<b>Isotype</b>	Mouse IgG2a, lambda
<b>Clone Name</b>	E29
<b>Purity</b>	Protein G affinity chromatography
<b>UniProt</b>	P15941
<b>Localization</b>	Cytoplasmic & cell surface
<b>Applications</b>	Immunohistochemistry (FFPE) : 1-2ug/ml for 30 min at RT Western Blot : 2-4ug/ml
<b>Limitations</b>	This MUC1 antibody is available for research use only.



Western blot testing of human T-47D cell lysate with MUC1 antibody (clone E29). This glycoprotein is commonly visualized between 120~500 kDa.



IHC analysis of formalin-fixed, paraffin-embedded human breast carcinoma stained with MUC1 antibody (clone E29).



SDS-PAGE analysis of purified, BSA-free MUC1 antibody (clone E29) as confirmation of integrity and purity.

## Description

In Western blotting, it recognizes proteins in MW range of 265-400kDa, identified as different glycoforms of EMA. EMA may provide a protective layer on epithelial cells against bacterial and enzyme attack. In immunohistochemical assays, it superbly stains routine formalin/paraffin carcinomas. Antibody to EMA is useful as a pan-epithelial marker for detecting early metastatic loci of carcinoma in bone marrow or liver.

## Application Notes

The optimal dilution of the MUC1 antibody for each application should be determined by the researcher.

1. Staining of formalin-fixed tissues requires boiling tissue sections in pH 9 10mM Tris with 1mM EDTA for 10-20 min followed by cooling at RT for 20 minutes.
2. The prediluted format is supplied in a dropper bottle and is optimized for use in IHC. After epitope retrieval step (if required), drip mAb solution onto the tissue section and incubate at RT for 30 min.

## Immunogen

Delipidated extract of human milk fat globule membranes was used as the immunogen for this MUC1 antibody.

## Storage

Store the MUC1 antibody at 2-8oC (with azide) or aliquot and store at -20oC or colder (without azide).