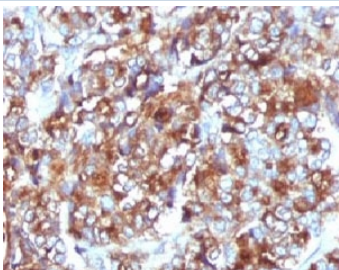


MUC-1 Antibody [clone MCN01-1] (V7026)

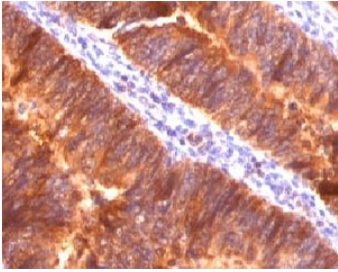
| Catalog No. | Formulation | Size |
|----------------|---|--------|
| V7026-100UG | 0.2 mg/ml in 1X PBS with 0.1 mg/ml BSA (US sourced) and 0.05% sodium azide | 100 ug |
| V7026-20UG | 0.2 mg/ml in 1X PBS with 0.1 mg/ml BSA (US sourced) and 0.05% sodium azide | 20 ug |
| V7026SAF-100UG | 1 mg/ml in 1X PBS; BSA free, sodium azide free | 100 ug |
| V7026IHC-7ML | Prediluted in 1X PBS with 0.1 mg/ml BSA (US sourced) and 0.05% sodium azide; *For IHC use only* | 7 ml |

[Bulk quote request](#)

| | |
|---------------------------|--|
| Species Reactivity | Human |
| Format | Purified |
| Host | Mouse |
| Clonality | Monoclonal (mouse origin) |
| Isotype | Mouse IgG1, kappa |
| Clone Name | MCN01-1 |
| Purity | Protein G affinity chromatography |
| Gene ID | 4582 |
| Localization | Cytoplasmic and cell surface |
| Applications | Western Blot : 1-2ug/ml Immunohistochemistry (FFPE) : 1-2ug/ml for 30 min at RT (1) Prediluted IHC Only Format : incubate for 30 min at RT (2) |
| Limitations | This MUC-1 antibody is available for research use only. |



IHC testing of FFPE breast carcinoma and MUC-1 antibody (clone MCN01-1).



IHC testing of FFPE colon carcinoma and MUC-1 antibody (clone MCN01-1).



Western blot testing of human T47D cell lysate with MUC-1 antibody (clone MCN01-1).
Expected molecular weight: 120-500 kDa depending on glycosylation level.

Description

Mucin-1 is a large cell surface mucin glycoprotein expressed by most glandular and ductal epithelial cells and some hematopoietic cell lineages. It is expressed on most secretory epithelium, including mammary gland and some hematopoietic cells. It is expressed abundantly in lactating mammary glands and over expressed in >90% breast carcinomas and metastases. The transgenic protein has been shown to associate with all four c-erbB receptors and localize with c-erbB1 (EGFR) in lactating glands. The gene contains seven exons and produces several different alternatively spliced variants. The major expressed form of the protein uses all seven exons and is a type 1 transmembrane protein with a large extracellular tandem repeat domain. The tandem repeat domain is highly O glycosylated and alterations in glycosylation have been shown in epithelial cancer cells. Mucin-1 antibody is useful as a pan-epithelial marker for detecting early metastatic loci of carcinoma in bone marrow or liver.

Application Notes

The concentration stated for each application is a general starting point. Variations in protocols, secondaries and substrates may require the MUC-1 antibody to be titrated up or down for optimal performance.

1. FFPE staining REQUIRES boiling sections in pH 9 10mM Tris with 1mM EDTA for 10-20 min followed by cooling at RT for 10-20 min.
2. The prediluted format is supplied in a dropper bottle and is optimized for use in IHC. After epitope retrieval step (if required), drip mAb solution onto the tissue section and incubate at RT for 30 min.

Immunogen

Human recombinant protein was used as the immunogen for this MUC-1 antibody.

Storage

Store the MUC-1 antibody at 2-8oC (with azide) or aliquot and store at -20oC or colder (without azide).

