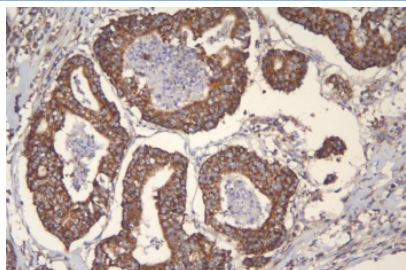


mtTFA Antibody [clone 4D9] (RQ5617)

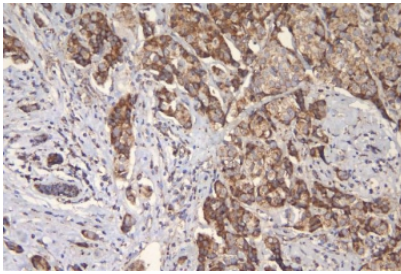
Catalog No.	Formulation	Size
RQ5617	0.5mg/ml if reconstituted with 0.2ml sterile DI water	100 ug

Bulk quote request

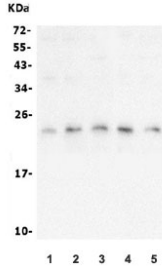
Availability	1-3 business days
Species Reactivity	Human
Format	Antigen affinity purified
Host	Mouse
Clonality	Monoclonal (mouse origin)
Isotype	Mouse IgG2b
Clone Name	4D9
Purity	Affinity purified
Buffer	Lyophilized from 1X PBS with 2% Trehalose and 0.025% sodium azide
UniProt	Q00059
Localization	Cytoplasmic
Applications	Western Blot : 1-2ug/ml Immunohistochemistry (FFPE) : 1-2ug/ml Flow Cytometry : 1-3ug/million cells
Limitations	This mtTFA antibody is available for research use only.



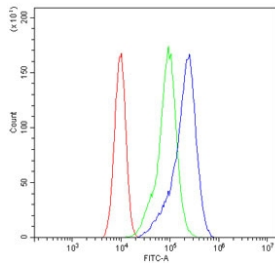
IHC staining of FFPE human rectal cancer with mtTFA antibody. HIER: boil tissue sections in pH6, 10mM citrate buffer, for 20 min and allow to cool before testing.



IHC staining of FFPE human breast cancer with mtTFA antibody. HIER: boil tissue sections in pH6, 10mM citrate buffer, for 20 min and allow to cool before testing.



Western blot testing of human 1) HEK293, 2) K562, 3) Caco-2, 4) Raji and 5) A549 lysate with mtTFA antibody. Expected molecular weight: 24~29 kDa.



Flow cytometry testing of human Caco-2 cells with mtTFA antibody at 1ug/million cells (blocked with goat sera); Red=cells alone, Green=isotype control, Blue= mtTFA antibody.

Description

TFAM (Transcription factor A, mitochondrial), also known as TCF6 or TCF6L2, is a 162-amino acid protein that activates transcription of each mitochondrial DNA (mtDNA) strand by binding to an element of approximately 30 nucleotides present in both the light-strand and the heavy-strand promoters. By Southern blot analysis of restriction enzyme digests of human/Chinese hamster somatic cell hybrid lines, Milatovich et al. (1992) mapped TFAM sequences, which they called MTTF1, to 3 different chromosomes: chromosomes 10, 7p, and 11q. By PCR-based screening of a somatic cell hybrid panel and by fluorescence in situ hybridization, Scott (2007) stated that the sequences mapped to chromosomes 7p (TCF6L1) and 11q (MTTF1, or TCF6L3) are pseudogenes. Larsson et al. (1997) mapped the mouse mitochondrial transcription factor A gene (Tfam) to the central part of mouse chromosome 10. This region exhibits syntenic homology with human 10q21. Mitochondrial transcription factor A is a key activator of mitochondrial transcription in mammals. It also has a role in mitochondrial DNA replication, since transcription generates an RNA primer necessary for initiation of mtDNA replication.

Application Notes

Optimal dilution of the mtTFA antibody should be determined by the researcher.

Immunogen

Amino acids EMKSWEQMIEVGRKDLLRRTIKKQRKY were used as the immunogen for the mtTFA antibody.

Storage

After reconstitution, the mtTFA antibody can be stored for up to one month at 4°C. For long-term, aliquot and store at -20°C. Avoid repeated freezing and thawing.

