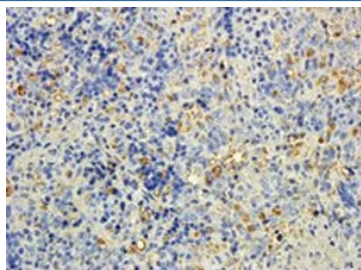


## MTMR9 Antibody (R33122)

Catalog No.	Formulation	Size
R33122-100UG	0.5 mg/ml in 1X TBS, pH7.3, with 0.5% BSA (US sourced) and 0.02% sodium azide	100 ug

[Bulk quote request](#)

Availability	1-3 business days
Species Reactivity	Human, Mouse, Rat
Predicted Reactivity	Cow, Dog, Pig
Format	Antigen affinity purified
Host	Goat
Clonality	Polyclonal (goat origin)
Isotype	Goat Ig
Purity	Antigen affinity
Gene ID	66036
Applications	Immunohistochemistry (FFPE) : 5-10ug/ml ELISA (peptide) LOD : 1:8000
Limitations	This MTMR9 antibody is available for research use only.



IHC staining of FFPE rat spleen with MTMR9 antibody at 5ug/ml. HIER: steamed with pH6 citrate buffer, DAB-staining.

### Description

Additional name(s) for this target protein: Myotubularin related protein 9

### Application Notes

Optimal dilution of the MTMR9 antibody should be determined by the researcher.

## **Immunogen**

Amino acids AELETEDGMQESP were used as the immunogen for this MTMR9 antibody.

## **Storage**

Aliquot and store the MTMR9 antibody at -20oC.