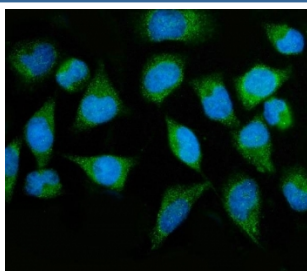


## MTMR2 Antibody (RQ6662)

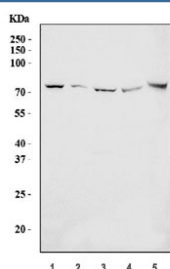
Catalog No.	Formulation	Size
RQ6662	0.5mg/ml if reconstituted with 0.2ml sterile DI water	100 ug

**Bulk quote request**

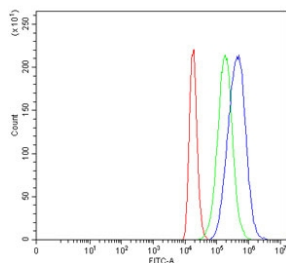
<b>Availability</b>	1-3 business days
<b>Species Reactivity</b>	Human, Mouse, Rat
<b>Format</b>	Antigen affinity purified
<b>Clonality</b>	Polyclonal (rabbit origin)
<b>Isotype</b>	Rabbit IgG
<b>Purity</b>	Antigen affinity purified
<b>Buffer</b>	Lyophilized from 1X PBS with 2% Trehalose
<b>UniProt</b>	Q13614
<b>Applications</b>	Western Blot : 1-2ug/ml Immunofluorescence (FFPE) : 5ug/ml Flow Cytometry : 1-3ug/million cells
<b>Limitations</b>	This MTMR2 antibody is available for research use only.



Immunofluorescent staining of FFPE human HeLa cells with MTMR2 antibody (green) and DAPI nuclear stain (blue). HIER: steam section in pH6 citrate buffer for 20 min.



Western blot testing of 1) human HeLa, 2) human Caco-2, 3) human HL60, 4) rat testis and 5) mouse testis tissue lysate with MTMR2 antibody. Predicted molecular weight ~73 kDa.



Flow cytometry testing of human 293T cells with MTMR2 antibody at 1ug/million cells (blocked with goat sera); Red=cells alone, Green=isotype control, Blue= MTMR2 antibody.

## Description

Myotubularin-related protein 2 also known as phosphatidylinositol-3,5-bisphosphate 3-phosphatase or phosphatidylinositol-3-phosphate phosphatase is a protein that in humans is encoded by the MTMR2 gene. This gene is a member of the myotubularin family of phosphoinositide lipid phosphatases. The encoded protein possesses phosphatase activity towards phosphatidylinositol-3-phosphate and phosphatidylinositol-3,5-bisphosphate. Mutations in this gene are a cause of Charcot-Marie-Tooth disease type 4B, an autosomal recessive demyelinating neuropathy. Alternatively spliced transcript variants encoding multiple isoforms have been found for this gene.

## Application Notes

Optimal dilution of the MTMR2 antibody should be determined by the researcher.

## Immunogen

Amino acids NLRFAHKPEGRTTRRSIFENLMK from the human protein were used as the immunogen for the MTMR2 antibody.

## Storage

After reconstitution, the MTMR2 antibody can be stored for up to one month at 4oC. For long-term, aliquot and store at -20oC. Avoid repeated freezing and thawing.