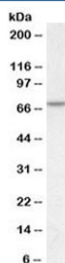


MTM1 Antibody (R36071)

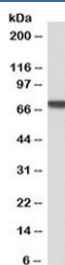
Catalog No.	Formulation	Size
R36071-100UG	0.5 mg/ml in 1X TBS, pH7.3, with 0.5% BSA (US sourced) and 0.02% sodium azide	100 ug

[Bulk quote request](#)

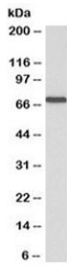
Availability	1-3 business days
Species Reactivity	Human, Mouse
Predicted Reactivity	Dog, Cow
Format	Antigen affinity purified
Host	Goat
Clonality	Polyclonal (goat origin)
Isotype	Goat Ig
Purity	Antigen affinity
Gene ID	4534
Applications	Western Blot : 1-3ug/ml ELISA (peptide) LOD : 1:8000
Limitations	This MTM1 antibody is available for research use only.



Western blot testing of human skeletal muscle lysate with MTM1 antibody at 1ug/ml. Predicted molecular weight ~70 kDa.



Western blot testing of HepG2 cell lysate with MTM1 antibody at 1ug/ml. Predicted molecular weight ~70 kDa.



Western blot of mouse skeletal muscle lysate with MTM1 antibody at 1ug/ml. Predicted molecular weight ~70 kDa.

Description

Additional name(s) for this target protein: Myotubular myopathy 1, CNM, MTMX

Application Notes

Optimal dilution of the MTM1 antibody should be determined by the researcher.

Immunogen

Amino acids SSPSQMMPHVQTHF were used as the immunogen for this MTM1 antibody.

Storage

Aliquot and store the MTM1 antibody at -20oC.