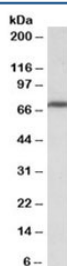


MTHFR Antibody (R36051)

Catalog No.	Formulation	Size
R36051-100UG	0.5 mg/ml in 1X TBS, pH7.3, with 0.5% BSA (US sourced) and 0.02% sodium azide	100 ug

[Bulk quote request](#)

Availability	1-3 business days
Species Reactivity	Human, Mouse
Predicted Reactivity	Cow, Dog, Pig, Rat
Format	Antigen affinity purified
Clonality	Polyclonal (goat origin)
Isotype	Goat Ig
Purity	Antigen affinity
Gene ID	4524
Applications	Western Blot : 0.3-1ug/ml ELISA (peptide) LOD : 1:8000
Limitations	This MTHFR antibody is available for research use only.



Western blot testing of NIH3T3 lysate with MTHFR antibody at 0.3ug/ml. Predicted molecular weight: ~75kDa.

Description

Additional name(s) for this target protein: Methylene tetrahydrofolate reductase

Application Notes

Optimal dilution of the MTHFR antibody should be determined by the researcher.

Immunogen

Amino acids SRPKSYIYRTQEWDE were used as the immunogen for this MTHFR antibody.

Storage

Aliquot and store the MTHFR antibody at -20oC.