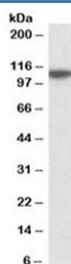


## MTHFD1L Antibody (R33660)

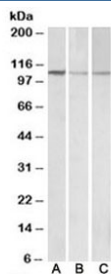
Catalog No.	Formulation	Size
R33660-100UG	0.5 mg/ml in 1X TBS, pH7.3, with 0.5% BSA (US sourced) and 0.02% sodium azide	100 ug

[Bulk quote request](#)

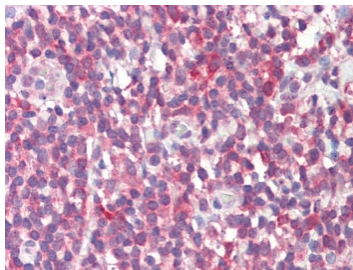
Availability	1-3 business days
Species Reactivity	Human, Mouse, Rat
Predicted Reactivity	Cow
Format	Antigen affinity purified
Host	Goat
Clonality	Polyclonal (goat origin)
Isotype	Goat Ig
Purity	Antigen affinity
Gene ID	25902
Localization	Cytoplasmic
Applications	Western Blot : 0.1-0.3ug/ml IHC (FFPE) : 5ug/ml ELISA (peptide) LOD : 1:32000
Limitations	This MTHFD1L antibody is available for research use only.



Western blot testing of human cerebellum lysate with MTHFD1L antibody at 0.1ug/ml.  
Predicted molecular weight: ~106 kDa.



Western blot of NIH3T3 (A), mouse brain (B) and rat brain (C) lysates with MTHFD1L antibody at 0.1ug/ml. Predicted molecular weight: ~106 kDa.



IHC testing of FFPE human tonsil tissue with MTHFD1L antibody at 5ug/ml. Required HIER: steamed antigen retrieval with pH6 citrate buffer; AP-staining.

## Description

Additional name(s) for this target protein: Methylenetetrahydrofolate dehydrogenase (NADP+ dependent) 1-like

## Application Notes

Optimal dilution of the MTHFD1L antibody should be determined by the researcher.

## Immunogen

Amino acids DTNDRFLRKITIGQ were used as the immunogen for this MTHFD1L antibody.

## Storage

Aliquot and store the MTHFD1L antibody at -20oC.