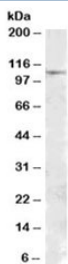


## MTHFD1 Antibody / C-1-tetrahydrofolate synthase (R35615)

Catalog No.	Formulation	Size
R35615-100UG	0.5 mg/ml in 1X TBS, pH7.3, with 0.5% BSA (US sourced) and 0.02% sodium azide	100 ug

[Bulk quote request](#)

<b>Availability</b>	1-3 business days
<b>Species Reactivity</b>	Human
<b>Predicted Reactivity</b>	Mouse, Rat
<b>Format</b>	Antigen affinity purified
<b>Clonality</b>	Polyclonal (goat origin)
<b>Isotype</b>	Goat Ig
<b>Purity</b>	Antigen affinity
<b>Gene ID</b>	4522
<b>Applications</b>	Western Blot : 1-3ug/ml ELISA (peptide) LOD : 1:1000
<b>Limitations</b>	This MTHFD1 antibody is available for research use only.



Western blot testing of human substantia nigra lysate with MTHFD1 antibody at 1ug/ml.  
Predicted molecular weight: ~102 kDa.

### Description

Additional name(s) for this target protein: Methylenetetrahydrofolate dehydrogenase (NADP+ dependent) 1

### Application Notes

Optimal dilution of the MTHFD1 antibody should be determined by the researcher.

### Immunogen

Amino acids RGDLNDCFIPCTPK were used as the immunogen for this MTHFD1 antibody.

## **Storage**

Aliquot and store the MTHFD1 antibody at -20oC.